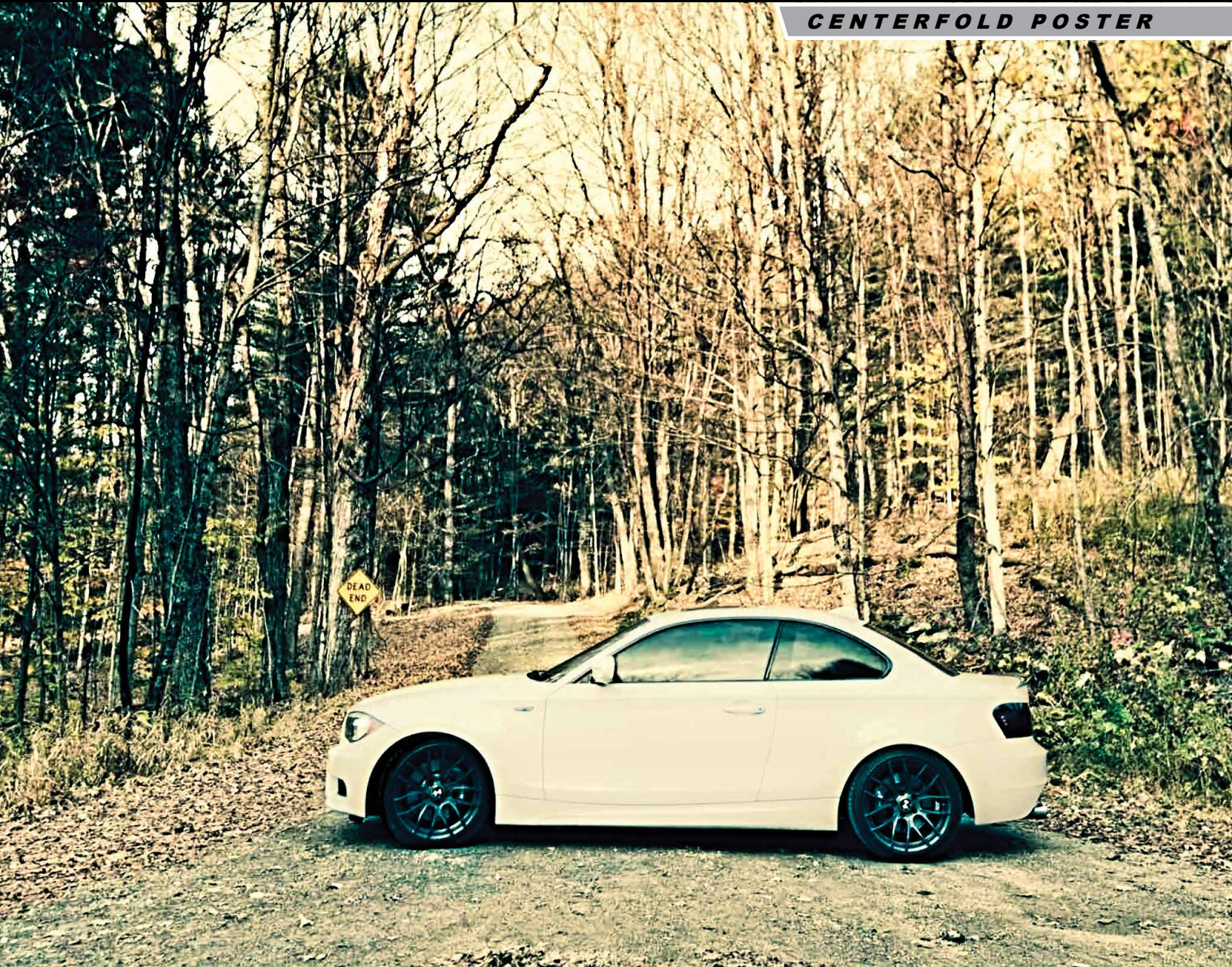


the **Profile**

newsletter of the
white mountain chapter BMW CCA

CHRIS TAYLOR'S 135i E82 COUPE

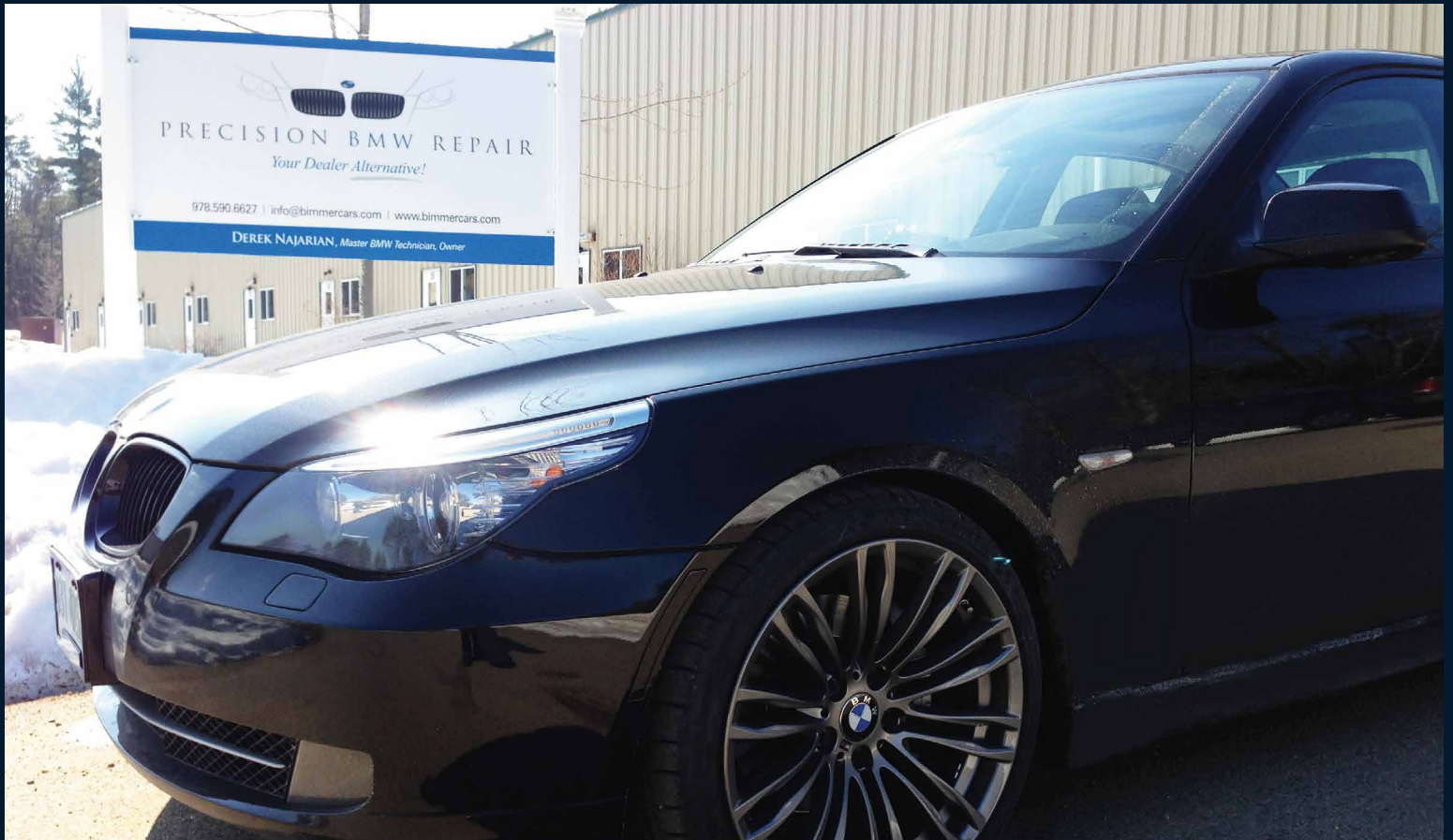
CENTERFOLD POSTER



february & march 2014

Over 20 years of BMW experience
OFFERING BMW AND MINI OWNERS THE UNCOMPROMISING SERVICE AND ATTENTION TO DETAIL FOR THEIR HIGH PERFORMANCE VEHICLE

PRECISION BMW REPAIR



WINTER/SUMMER STORAGE

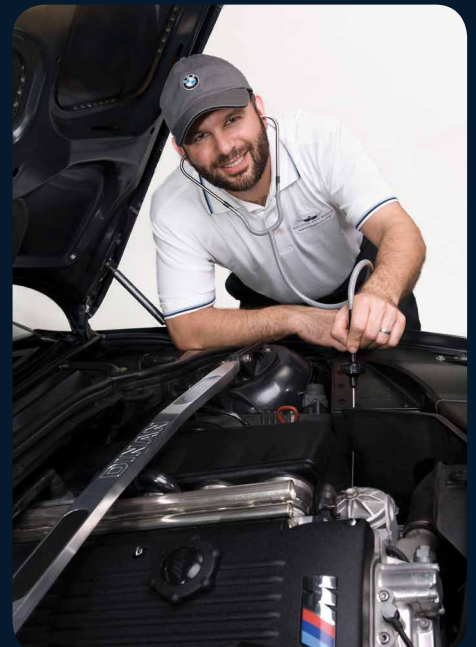


SERVICES INCLUDE

- Inspection I and II
- Wheel Straightening
- Track Inspections
- Pre Purchase Inspections
- Oil Change Loyalty Program
- Computer Diagnostics
- Brake and ABS System Repairs
- Performance Upgrades
- Paintless Dent Removal
- Low Profile/Run-Flat Tire Inst.

1 MILE FROM RT.101

OPEN WEEKDAYS & WEEKENDS



BMW LOANER CARS AVAILABLE

WWW.BIMMERCARS.COM | 978-384-0BMW (0269) | BMWREPAIR@COMCAST.NET
25 COMMERCIAL DRIVE UNIT 1A BRENTWOOD, NH 03833





BMW Car Club of America
White Mountain Chapter

contact officers or staff members
via the chapter website

www.whitemtn-bmwclub.org

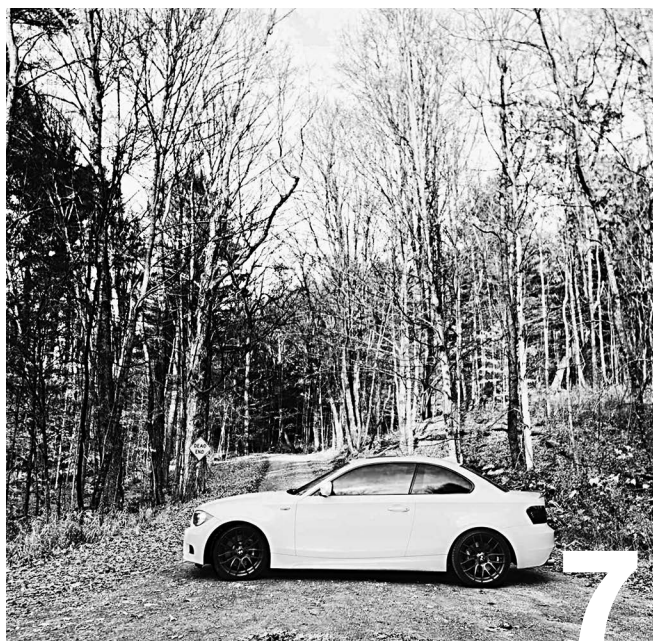
president David Harrison	membership chair Michael Morin	marketing & sponsorship director Dana Sion d.sion@whitemtn-bmwclub.org	newsletter copy collection editor Rachelle Harrison editor@whitemtn-bmwclub.org
vice president Dana Sion	driving events committee chair Mark Viola	newsletter advertising manager Dana Sion d.sion@whitemtn-bmwclub.org	newsletter publication editor Martin Callahan mjc.design.works, LLC
secretary Roland Beaulé	social events committee chair Cassandra Vorisek-Creto		
treasurer Johann Wrede	web masters Dick Demaine Johann Wrede		

in this issue

- 3** chapter officers and staff
- 4** address from the board
- 5** chapter membership
- 6** upcoming events
 - » Pancake Breakfast at Parker's Maple Barn
- 7+** camera shots poster
 - » 2010 BMW 135i E82 Coupe
by: Chris Taylor
- 10** news + general info bulletin
 - » BMW CCA Foundation Grant Match
 - » e.Profile service available
- 11** the knucklebuster
 - » One of the Great Automotive Misnomers
by: David Harrison
- 12** chapter calendar
- 13** impressions from the winding road
 - » Ruminations of My Trip to Saratoga
by: Stan Chamallas
- 13** job posting
 - » Profile copy collection editor
- 14** classifieds

on the cover

original image: Chris Taylor
post-process: Martin Callahan



Chris Taylor's 2010 Alpine White 135i E82 Coupe

If you have to explain it, they don't get it.
If they don't get it, they probably never will.

about the Profile:

The Profile is published every two months. Club members are encouraged to submit BMW and/or club related articles and photos for publication. **No submission is too short, really. Even if it's just a paragraph or two, send it in!** Longer features are certainly welcome as well. All submissions must be digital, and all images must be submitted at their highest available resolution.

Submission deadlines are always the first Friday of the month prior to the newsletter issue (i.e. deadline is in May for the June/July issue). Send all submissions or questions to the copy collection editor. For information on advertising in *the Profile*, contact the newsletter advertising manager.

The Profile is a publication of the White Mountain Chapter, BMW CCA, Inc. ("the club") and its contents remain the property of the club. All information furnished herein is provided by the club and its members, for club members only. The club assumes no liability for any of the information contained herein. The ideas, opinions and suggestions expressed in this newsletter are those of the authors and no authentication is implied. Unless otherwise noted, none of the information in this newsletter is "factory approved." Modifications within the warranty period of your BMW may void the warranty. Permission is hereby granted to reproduce any material published herein provided full credit is given to the author and the White Mountain Chapter, unless otherwise noted. Courtesy copy to WMC requested. The Profile is published under contract by mjc.design.works, LLC, 195 Little Bay Rd., Newington, NH 03801, printed by UniGraphic Inc., 110J Commerce Way, Woburn, MA 01801, and mailed from Manchester, NH.

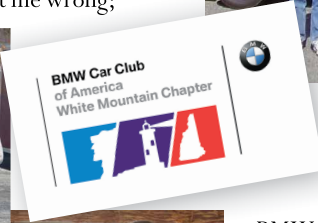
Experiencing What Really Matters in the World It's not *Just* a Car Club

by: David Harrison , WMC president

As the saying goes, "It's just a game". But when you are watching the World Series it is hard to remember that baseball is only a game (especially if the Red Sox are on a hitting streak in the 9th inning).

For us White Mountain Chapter members it is equally difficult to think of a BMW as "just a car" and the BMW CCA as "just a club". Chances are, if you read *the Profile* you think of your vehicle as more than, just a car. You may consider the Toyota parked next door as, just a car, but your German ride is somehow much more.

I certainly do have a passion for BMW, but don't get me wrong;



I could not help but take account of all that has happened 2013 as the new year rolled in. The loss of a dear relative, marriage of another, and a close friend currently battling cancer all bring into focus what is truly important. My calendar for 2014 will again bring highs and lows. Fortunately, the BMW CCA and



our White Mountain Chapter can always be counted on to offer a well deserved diversion for us club members and the more the merrier.

Perhaps the emotion that comes from owning a BMW starts as a love at first sight event or maybe it is cultured through many encounters with the marque. Regardless of how each of us came to be part of the BMW fold and our chapter, we all have our own reasons for belonging. So feel free to join a few additional BMW fanatics to share the passion this year or better yet, step in and give us a hand as we plan our 2014 events. The people you will meet have a lot in common with you and you may very well begin some wonderful friendships. And that is what really matters in this world.

Hope to see you soon,

David

TURNER
motorsport

978-388-7769
TurnerMotorsport.com



**We are your #1 Source for
all BMW Parts & Service
Performance & Replacement.**

Experience the Turner Motorsport difference today. Shop the website, give us a call or visit our full service facility and showroom.



Showroom hours: Open Monday-Thursday 9-6pm Friday 9-5pm
16 South Hunt Road | Amesbury, MA 01913 | Right off 495 Exit 54

Chapter Membership

Welcome to 2014!

by: Michael Morin, WMC membership chair

What's your resolution for the new year? I'm sure many of you consider New Year's resolutions to be quite passé but I'm sure you need or want to do or finish something this year. Of course, the stereotypical thing people say is to get back into shape. You all have that person in your life. They want to get into a state of fitness that they never were – not in high school, not in college, not ever. Let's get practical! Perhaps you've been meaning to clean out (yes, dear) your garage (for a new Bimmer?) or move into a new home? What about taking advantage of your BMW Car Club membership after all these years? Maybe you got a membership for Christmas and you have no idea what to do. Check out the calendar on our website and come to the next membership meeting. To help you make it a date, check out our offer below! In the meantime, let's get down to some numbers.

On the membership news front, the White Mountain Chapter has a decrease of 10 members since the last issue of The Profile. We've been increasing our membership rolls slowly but surely but sometimes we have a hiccup in the progression. We have 564 primary members, 91 associate members and 9 LIFE members for a total of 664 members. We have members in California, Arizona, Connecticut, Maine, Massachusetts, North Carolina, New Jersey, Texas, Virginia and Vermont and of course, most of our members hail from New Hampshire. Here's a shout-out to our members around the country. Locally speaking, Hillsborough County has nearly 35% of the membership whereas Rockingham has about 32% of it. Nashua is the city with the highest concentration of members with 49. Manchester is next with 25. Rounding out the top 10 are Bedford, Amherst, Windham, Hollis, Merrimack, Londonderry, Concord, Hudson and Derry.

If you've just purchased a new or pre-owned BMW, you need to make sure you file your rebate WITHIN 60 days of documented date of sale. There are no exceptions granted for any reason.

Treadmill incline set at 14,

Michael

Check us out online!



WhiteMtn-BMWClub.org



Welcome!
to our newest
White Mountain Chapter members

Jamie Gowing	*	Hampton
Brian Goodridge	*	Hooksett
Jeremy Berger	*	Bedford
David Sullivan	*	Londonderry
Travis Fitzgerald	*	Nashua
Eileen Scullin	*	Bedford
Benjamin Wagstaff	*	Pelham
Brian Van Etten	*	Bedford
Rafael Tejada	*	Nashua
James McElroy	*	Hollis
Bryan Baxenden	2006 M3	Hampstead
Brett Gordon	2010 M5	Bedford
Patricia Dunn	*	Laconia
Marlene Goldman	*	Concord
Connor Ellison	*	North Hampton
Syed Agha	2005 330i ZHP	Hanover
Peter McDonald	2013 3 Series	Nashua
Jeffrey Baker	*	Wilton
Troy Neily	*	Litchfield
Ed Tomlinson	*	Exeter
Kurt Muhlfelder	*	Concord
John Baier	*	Hampton Falls
Robert Benedetti	*	Londonderry
Michael Warhola	*	Merrimack
Jan Slezak	2011 M3	Durham

BMW Car Club
of America
White Mountain Chapter



Free Light Dinner and Drink!



Entitles bearer to a free meal at general membership meeting

Courtesy of the White Mountain BMW Car Club of America

*Restrictions apply. Bearer must be BMW CCA member in good standing. Must present this publication with BMW CCA membership card. Dates for use available at www.WhiteMtn-BMWClub.org. Expires 6/2014.

Destination: Parker's Maple Barn in Mason
The White Mountain Chapter's Annual Pancake Breakfast Outing

by: Cassandra Vorisek-Creto, sec chair



One right of passage for anyone who lives in New Hampshire is a trip during maple sugaring season to Parker's Maple Barn in Mason. Parker's is renowned for their excellent food and of course, their maple syrup. Discover why, for yourself!



Come join fellow club members for a great New Hampshire experience and what's become a WMC tradition. Be sure to bring your appetite! This is a buy-your-own event and perfect for families. After breakfast, you can wander over to the sugar shack to watch how they make maple syrup and browse through the country store.

Parker's Maple Barn
Sunday, March 23rd, at 8:00am

Whether your BMW is still in winter hibernation or not, this is a must attend Spring ritual! You'll be glad you did.

For more information, visit www.whitemtn-bmwclub.org.



photo: Paul Mitchell

Do it yourself and save big!

In our free, tech newsletter *Fast Times*, we show you – step by step – how to repair and maintain your BMW or MINI. You can save hundreds, if not thousands of dollars on labor charges and parts. Browse all issues since 2003 at www.BavAuto.com/newsletter.



BMW parts, accessories and knowledge since 1974.

www.BavAuto.com • 800.535.2002

Performance Upgrade Checklist

- ✓ Performance Exhaust System
- ✓ High Performance Ignition System
- ✓ High Flow Intake System
- ✓ Performance Chip

Great. But, how much did you gain?

Bring your BMW to New England Dragway's popular Wednesday & Friday Street Night before and after you make those upgrades. Establish a baseline and make sure you're getting the most for your performance dollar.

New England Dragway is conveniently located off Exit 8—NH Route 101 in Epping, New Hampshire. Visit our website www.newenglanddragway.com for more information.



Bring this ad for a \$3 discount on a Wednesday or Friday Spectator ticket!

Camera Shots Poster 2010 BMW 135i E82 Coupe

original image by: Chris Taylor
post-process & design by: Martin Callahan

I got my first car magazine when I was 11. My mother had told me I could not get a car magazine, that she already got me a *Highlights* subscription. I secretly snagged a subscription card from the magazine aisle during a subsequent grocery store trip, slyly mailed it at a trip to the post office, and fast forward a few months I was writing a letter to *Hurst* magazine explaining how I was 11 and not able to pay the bill for the subscription. Amazingly enough I received my 24 month subscription without interruption.

I spent the next 13 years shopping (dreaming) for cars every



Some people just get it - it's not "just a car".

month when my subscription arrived (which I did then pay for with real American dollars).

The car shopping (dreaming) intensified in college and I when I graduated, my decision was meticulously researched and finalized - a new 2010 Alpine White 135i E82 Coupe.

Yes, I have been the recipient of an eye roll when detailing my car three days before a blizzard, but when I asked my wedding photographer to take some pictures of my car during our wedding shoot last week my wife just smiled. Some people just get it.

pull-out poster on following pages

Want a centerfold poster of *your* car?

Take your best shot and send it in to the Profile for consideration. (See page 12.) Your image must be digital and at the highest resolution possible. Include a caption or short write-up to go along with it. -ed.

RECARO PERFORMANCE FRICTION BRAKES
Stilo OMP COBRA RACING SCHROTH HMS motorsport

026

If you drive on the track, come see us.
We have what you need.

9A Electronics Avenue - Danvers, MA 01923 - 888.467.3269
www.hmsmotorsport.com



German AutoSport

18 Chestnut Street

Amesbury, MA 01913

978-388-1288

www.germanautosport.com

Over 20 years of European car experience

FREE ESTIMATES including computer diagnosis

NOW OFFERING FULL DETAIL SERVICES



2010 BMW 135i E82 COUPE ALP



PINE WHITE

chris taylor | image
martin callahan | post-process & design

Building the BMW CCA Foundation WMC Supports Successful Grant Match Campaign

by: David Harrison, president



In December the BMW CCA was given a challenge and generous gift by an anonymous sponsor. The BMW CCA Foundation Challenge Grant was established. Up to \$250,000 was promised by the benefactor for the BMW CCA Foundation. He would match contributions from the BMW CCA for two months.



Basically, combined funds donated to the Foundation were going to be matched one-

for-one. What an opportunity and motivation for individuals and chapters to help out a truly great organization. Our White Mountain Chapter's gift of \$1000 was doubled and combined with hundreds of others. It will be used for the Library, Archive, and Museum programs. The support of the campaign's objectives will also expand the Street Survival program with hundreds more teen drivers every year which continues to save lives well into the future.

Thanks in part to our chapter's support, and club member participation, over \$246,000 was raised club-wide for the challenge. With the matching funds, the total contribution to the Foundation was over \$492,000. This just shows what we can do when our members and chapters pull together for a great cause.

To learn more about the BMW CCA Foundation see the ad below and visit their website: www.bmwccafoundation.org

e.Profile Service Available Sign Up Online

Chapter members receiving *the Profile* by postal mail can sign up for an "e.subscription". Instead of getting a printed copy of *the Profile*, members who opt in to this service will receive e.mail notification allowing access to the newsletter before it's even printed! Archive back issues will continue to be available online to anyone, whether they're signed up for this service or not.



At your fingertips, when you want, wherever you are - *the e.Profile*.

Primary (non-associate) chapter members can sign up for this service at: www.whitemtn-bmwclub.org/electronic_profile.html. Club membership number is required. After sign up, you'll be notified that you'll no longer be receiving print copies of *the Profile* newsletter in the mail, but you can unsubscribe from this service at any time and future newsletters will once again be mailed to you. Once you're signed up, changing your e.mail address is as simple as signing up again with your new address, so no matter where your life may take you around the globe, you'll never have to miss an issue of *the Profile*.

sign up at:

www.whitemtn-bmwclub.org/electronic_profile.html

Help us save BMW...

M. Der stärkste Buchstabe der Welt.

well at least a small part of it.

The Library, Archives, and Museum Program (LAM) has created a repository for BMW-related historical documents, literature, and paraphernalia, providing the public with access to rare and interesting BMW artifacts while ensuring their continued existence. This archive is housed in Greenville, South Carolina near the BMW CCA National Office and BMW Manufacturing.

Our growing Archives, Library, and Museum needs your tax-deductible donations.

See our website for more info.

Join the Drive to Donate!



▶ www.bmwccafoundation.org
864.329.1919

One of the Great Automotive Misnomers - All Season Tires Why Winter and Summer Tires Still Make Sense

by: David Harrison

Remember how everyone in the neighborhood used to put “snow tires” on the family car every autumn? My dad and I did to prepare the old Rambler for the winter. It was the only way to get around town after the roads turned white with snow.

By the time I bought my first BMW everyone seemed to be running on “all season” tires. What a savings in time, money, and inconvenience. Thank goodness some tire scientist finally created magical tires that tamed all weather conditions. At least that was the sales pitch from all the major retailers. Who was I to question otherwise? At least that is how I thought until I discovered “performance” tires.



If you have a BMW and are a White Mountain Chapter member, you probably consider performance as a major reason for buying a car with Roundel on the hood. To get said

performance you need performance tires. They bring handling to the level you expect and which was intended by the German engineers. However performance tires will not get you through a New England winter even with the now almost mandatory all-wheel-drive option at the dealerships.

Here is how I think about tires. They are shoes for your car. I have sneakers for walking the trails behind my house in summer. They are sporty and great for the warm weather and grip quite well during the fairest season. But, they do not work well when the snow covers the ground. Right now they are in the back of my closet having been replaced by boots. The boots are made of soft rubber and have knobby treads for snow, slush, and ice. To wear



sneakers in winter and snow boots in summer is just plain dumb. So why not change your car’s shoes as well to match the season?

There are two ways to approach the twin tire setup. One is to buy a set of performance tires and a set of winter tires for the same wheels. This



To wear sneakers in winter and snow boots in summer is just plain dumb.

may be initially cheaper but you have to get the same sized tires to fit the rims. You also are at the mercy of your shop’s schedule. And guess what, they are always busy in spring and fall when the weather changes.

The other choice is to buy a full package of tires and rims combined to suit your needs. Typically, this means taller and skinner rubber for better traction and pot hole protection. I have always preferred this option. When the climate changes I can swap out a set in my driveway and on my schedule. Of course you can still go to your favorite shop where they are more likely to squeeze you in for just a quick change over. Without the need for remounting and balancing, it’s cheaper too. Your tires will also last twice as long as otherwise, because only one set at a time is ever on the road.

While new wheel and tire suppliers are many, (just look in Roundel) used sets are abundant and cheap. Whenever someone sells a car they often have winter tires in storage. Look in any of the club publications (page 14 of the one you’re reading now for example) for used sets and get the best of your winter and summer driving – because two sets are definitely better than one.

accelerate
YOUR BUSINESS

HUNDREDS
OF BMW ENTHUSIASTS WILL SEE THIS AD.
IT COULD BE YOURS.
FIND OUT HOW.

CONTACT:
DANA SION
WMC MARKETING & ADVERTISING DIRECTOR
d.sion@whitemtn-bmwclub.org

Kensington
AUTOWORKS

SERVICE AND REPAIRS FOR ALL MAKES AND MODELS
SPECIALIZING IN BMW SERVICE

272 South Road • Kensington NH 03833
(At the Junction of Route 107 & Route 150)

Tel: (603) 394-0081 • Toll Free: (866) 694-0081
WWW.KENSINGTONAUTOWORKS.COM

www.whitemtn-bmwclub.org/calendar.html

Saturday February 1st, 2014 9:00am - 3:00pm

**Tech Session at
3D Auto Works of Hudson, NH**

Complimentary multiple point inspection of any BMW or MINI while you watch firsthand and engage in an open Q&A with a BMW/MINI Tech. Hosted by 3D Auto Works, One Industrial Drive, #7 Hudson, NH. Questions? Contact (603) 882-3400. COST: FREE! RSVP



Monday February 24th, 2014 6:30pm - 8:30pm

Social Event Committee Meeting

Join the Social Events Committee in planning for up-coming events. New committee members are always welcome. Meeting location is the Airport Diner in South Manchester. COST: FREE Food and Drinks, RSVP

Friday March 7th, 2014 5:00pm

Profile submission deadline

All general content (excluding ads) to be considered for inclusion in the Apr/May Profile must be received by the copy collection editor. Submissions and questions to editor@whitemtn-bmwclub.org.

Monday March 10th, 2014 6:30pm - 9:00pm

Chapter Membership Dinner

Come join us for engaging conversation, camaraderie, and a free light dinner and drinks at our bi-monthly meeting. This month's meeting location is at The Common Man in Merrimack. COST: FREE Food and Drinks, RSVP

Monday March 24th, 2014 6:30pm - 8:30pm

Social Event Committee Meeting

Join the Social Events Committee in planning for up-coming events. New committee members are always welcome. Meeting location is the Airport Diner in South Manchester. COST: FREE Food and Drinks, RSVP



Advanced Driving Skills School at NHMS.

Saturday April 12th, 2014 8:00am - 5:00pm

Advanced Driving Safety Skills School

Have fun and learn important car control skills at our Advanced Driving Safety Skills school. New Hampshire Motor Speedway. Questions? Contact registrar@whitemtn-bmwclub.org. COST: \$85, Registration opens 02/01/14

Friday April 18th, 2014 8:00am - 5:00pm

Cabin Fever Driving School

Spring into the year with our first High Performance Driving school of the season! Be sure to sign up early for the best pricing. Held at New Hampshire Motor Speedway NHMS, Questions? Contact registrar@whitemtn-bmwclub.org. COST: TBD, Registration opens 02/01/14



High Performance Driving School at NHMS.

Friday May 2nd, 2014 5:00pm

Profile submission deadline

All general content (excluding ads) to be considered for inclusion in the Jun/Jul Profile must be received by the copy collection editor. Submissions and questions to editor@whitemtn-bmwclub.org.

Monday May 12th, 2014 6:30pm - 9:00pm

Chapter Membership Dinner

Come join us for engaging conversation, camaraderie, and a free light dinner and drinks at our bi-monthly meeting. This month's meeting location is at The Common Man restaurant of Windham. COST: FREE Food and Drinks, RSVP

more on the **chapter website!**





16 Deer Run Road
Candia, NH 03034
sales@synaptic3.com

MOTORSPORTS • FABRICATION • SPECIALISTS

- AWD Dyno Tuning & Rental
- Engine Management / Cobb Pro Tuner
- Custom Forced Induction Systems
- Safety Cage Design & Construction
- Track Alignments & Corner Balancing
- Fender Rolling

603 · 244 · 4631

WWW.SYNAPTIC3.COM

MOTORSPORTS • FABRICATION • SPECIALISTS

SYNAPTIC 3 Performance / a division of RAD Motorsports, LLC.



www.whitemtn-bmwclub.org/calendar.html

about chapter calendar:

Registration, RSVP, travel directions, and details for all listed events are on the chapter website.

High performance driving schools have special advance requirements.

Contact the advertising manager for ad submission deadlines.

Behind the Wheel of an E9 Coupe Every Drive can become an Adventure Abridged Ruminations of My Trip To Saratoga

by: Stan Chamallas



Rob diagnosed the problem as a fuel delivery issue and most likely vapor lock. Releasing line pressure seemed to work... for a while. The car



Destination *Vintage at Saratoga*, October 2013. It was a glorious weekend at Saratoga and Lime Rock! The weather started out gray as we drove through a fine mist from Manchester, New Hampshire through Vermont, but the eventual sun turned the weekend beautiful. And there we were, on another adventure; John, Adam and I; three friends cruising together from New Hampshire to enjoy a weekend of classic car splendor.



drove beautifully until we reached Lime Rock Park where it again died repeatedly, almost denying me my parade laps. I did manage fortunately to get one full lap in, but as I pulled off to park, kaput.

The Great White however, developed an issue where the engine would start bucking, sometimes backfire then either smooth out or... die. It died once more as

The problem with my coup was the fuel pump. It was slowly dieing. It died about 15 minutes away from Lime Rock.



Rob Segal to the rescue.

we entered the Saratoga museum parking lot. As fate would have it, Rob "the Hack Mechanic" Segal was there to greet us and our misfortune and jumped into immediate action.

More frenzied work under the hood before lunch and it was gratefully running again.

On the way home as we rolled through Great Barrington a BMW fan stopped and recommended a local repair shop. Domenic at AutoBahn sent a tow truck immediately, and within twenty minutes it was up on the shop lift. An hour or so later, with a new fuel pump, I was off!

other memorable adventure with the Great White and friends was in the books.

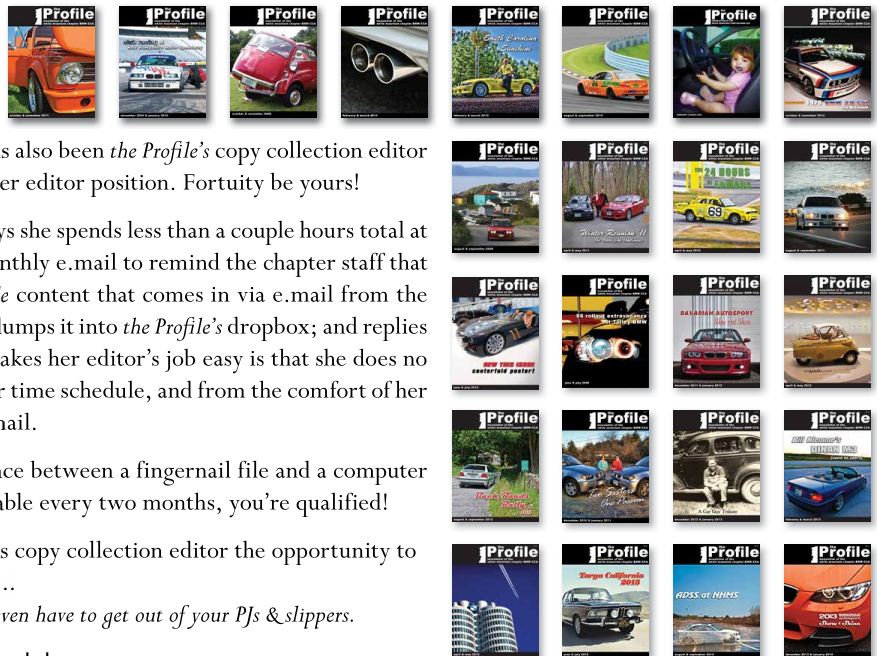


No problems since, and an-



Fame & Fortune Could be Yours! Don't Pass Up This Opportunity

by: Martin Callahan, *Profile* production editor



Rachelle Harrison, a very active member of the SEC, has also been *the Profile's* copy collection editor for almost three years now; she would like to resign her editor position. Fortuity be yours!

The position requires very little time or effort. Rachelle says she spends less than a couple hours total at her keyboard for each *Profile* edition. She sends out a bi-monthly e.mail to remind the chapter staff that the submissions deadline is approaching; collects *the Profile* content that comes in via e.mail from the chapter membership; confirms the material is usable then dumps it into *the Profile's* dropbox; and replies to the occasional inquiry e.mail sent to *the Profile*. What makes her editor's job easy is that she does no real editing of any of the content; she just collects it - on her time schedule, and from the comfort of her own keyboard - no travel, no meetings, just a bit of PR e.mail.

No prior experience is necessary! If you know the difference between a fingernail file and a computer file, know how to use e.mail and have a couple hours available every two months, you're qualified!

It's said that networking is key to personal success today; as copy collection editor the opportunity to expand your network to gain fame and fortune is limitless...

...and you don't even have to get out of your PJs & slippers.

Contact Rachelle at editor@whitemtn-bmwclub.org



Join the twitter conversation
@WhiteMtnCCA



www.whitemtn-bmwclub.org/classified_ads.html

Parts for Sale

X3 Cargo Cover

Interior cargo bay retractable cover, gray, fits BMW X3 2004-2007, slightly used in very good shape - never really used. Located in Derry, NH. \$250 (new they run about \$700). Call Rachelle Harrison at 603-216-2829, or e.mail Rachelle via the chapter website.



5-Series Winter Wheels and Tires

Wheels and M&S Winter Tires 5 series from 1997-2003. For E39 BMW. Came off M5 and will fit all 5 series from 1997-2003. Dunlop 245/45 R17 M&S with 1/4" tread depth. Wheels are five spoke Borbet Aluminum and have some corrosion but completely reliable. \$300. Contact David 603-216-2829 in Derry. E.mail David Harrison via the chapter website.



Cars for Sale

1995 E34 Parts Car

VIN WBAHD5320RGB36683

Front end damage. 170,000 miles. Five speed, red exterior, tan interior. Some rust, good glass, rear tail lights, new shocks, springs, snow tires. Can send pictures. \$900 Call Dick Demaine at 603-560-4911, or e.mail Dick via the chapter website.



www.whitemtn-bmwclub.org/classified_ads.html

about classifieds:

Chapter members can submit (non-commercial) ads at no cost, which will run for three months on the website. Ads listed on the website at the time of publication are published in *the Profile*, space permitting. (Submit photos for inclusion with printed classifieds to *the Profile's* copy editor.) Ad requests submitted online are subject to approval by the WMC. The submitter, not the WMC, is responsible for the accuracy of ad content. The WMC cannot guarantee, in any manner whatsoever, items listed in the classifieds. To see the most current selection of classified ads, check out the chapter website.



AUTO WORKS, INC.

Your independent service facility since 1988

specializing in

BMW & MINI

quality service



- Pre-Purchase Inspection
- Routine Maintenance
- Major Service & Repair
- Performance Upgrades
- Alignment Services
- Detail Services
- Pre-Track Inspection
- Race Car Preparation

**BMW or MINI, road or track,
always ready to meet your
automotive needs**

**up-to-date technical training
latest diagnostics equipment
superior quality service**



Proud members of:



603.882.3400 • www.3dautoworks.com
One Industrial Drive • Route 111 • Hudson, NH 03051

For the Love Of Your Automobile
Expert BMW service and repair with 45 years of combined craftsmanship.



- Over 7,000 square feet of space
- Custom Fabrication
- Chassis Dynamometer testing & vehicle calibration.
- Selling, Maintaining
- Founded on a family business that started in 1952.
- Enclosed Car Transportation

KMC
Kachel Motor Company

425 Canal Street
South Lawrence, MA

(617) 759 8973
www.kmcauto.com

BMW Car Club
of America
White Mountain Chapter



PRESORTED
STANDARD
U.S. POSTAGE PAID
MANCHESTER, NH
PERMIT 420

BMW Car Club of America
White Mountain Chapter
P.O. Box 304
Londonderry, NH 03053



www.whitemtn-bmwclub.org

VSR
www.VSR1.com
Celebrating 10 years of specialty service!



Vintage Sports & Racing, llc

Authorized Dealer for:

*TC Kline - Recaro/Cobra/Momo/Sparco Seating
Bilstein & Koni Shocks - Redline Lubricants - Schroth Racing Safety Equipment*

Routine Services including:

*Inspection I & Inspection II
Computer Diagnostics
Cooling & AC System Service
Suspension Service
Brake System Service*



603.228.2888

INFO@VSR1.com

3 Robinson Rd. Bow, NH



Printed on an HP Indigo 7000 • UniGraphic Inc. • 110J Commerce Way Woburn, MA 01801 • 781.231.7200 • www.uni-graphic.com