

the Profile

newsletter of the
white mountain chapter BMW CCA



Over 20 years of BMW experience
OFFERING BMW AND MINI OWNERS THE UNCOMPROMISING SERVICE AND ATTENTION TO DETAIL FOR THEIR HIGH PERFORMANCE VEHICLE

PRECISION BMW REPAIR



WINTER/SUMMER STORAGE

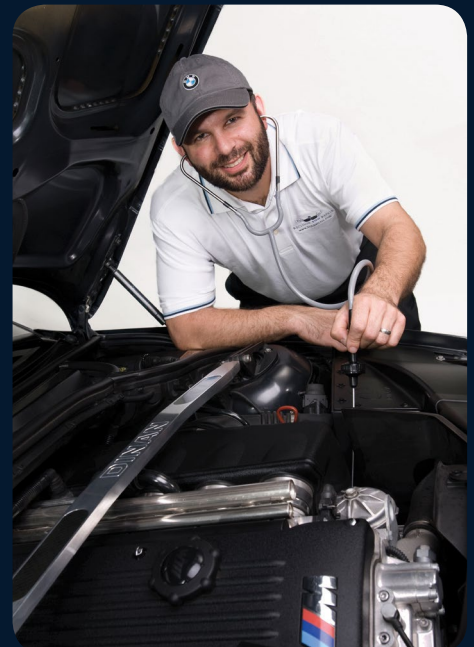


SERVICES INCLUDE

- Inspection I and II
- Wheel Straightening
- Track Inspections
- Pre Purchase Inspections
- Oil Change Loyalty Program
- Computer Diagnostics
- Brake and ABS System Repairs
- Performance Upgrades
- Paintless Dent Removal
- Low Profile/Run-Flat Tire Inst.

1 MILE FROM RT.101

OPEN WEEKDAYS & WEEKENDS



BMW LOANER CARS AVAILABLE

WWW.BIMMERCARS.COM | 978-384-0BMW (0269) | BMWREPAIR@COMCAST.NET
25 COMMERCIAL DRIVE UNIT 1A BRENTWOOD, NH 03833





**BMW Car Club
of America
White Mountain Chapter**

contact officers or staff members
via the chapter website

www.whitemtn-bmwclub.org

president David Harrison	membership chair Michael Morin	marketing & sponsorship director Dana Sion d.sion@whitemtn-bmwclub.org	newsletter copy collection editor Pete McDonough editor@whitemtn-bmwclub.org
vice president Dana Sion	driving events committee chair Mark Viola	newsletter advertising manager Dana Sion d.sion@whitemtn-bmwclub.org	newsletter publication editor Martin Callahan mjc.design.works, LLC
secretary Roland Beale	social events committee chair Cassandra Vorisek-Creto		
treasurer Johann Wrede	web masters Dick Demaine Johann Wrede		

in this issue

- 3** chapter officers and staff
- 4** address from the board
- 5** chapter membership
- 6** impressions from the winding road
 - » Street Night at New England Dragway
by: Pete McDonough
- 7** in the rear view mirror
 - » All BMWs Have Soul
by: David Harrison
- 8** upcoming events
 - » VSCCA Vintage Rallye Tour 2014
- 9** word puzzle
 - » Parts is Parts
by: Martin Callahan
- 10** sec update
- 11** general announcements
 - » 2014 WMC Election Candidate's Call
 - » BMW CCA App Gets Update
- 12** chapter calendar
- 13** recent events
 - » BMW CCA Day at Larz Anderson Museum
text by: Roland Beale
photos by: David Harrison & Johann Wrede
- 14** classifieds

on the cover

image by: Eileen Scullin
text by: Michael Morin



A BMW Art Car?

White Mountain Chapter member, Eileen Scullin, is the owner of this 2013 BMW Z4 sDrive 35i. The car was purchased in the spring of 2013 from Tulley BMW in Manchester. The exterior color of the vehicle is Space Gray Metallic with a Beige interior.

Eileen is currently a student at New Hampshire Institute of Arts working toward a fine arts degree in Photography. This image was part of a portfolio of sport and muscle cars she developed last fall.

about the Profile:

The Profile is published every two months. Club members are encouraged to submit BMW and/or club related articles and photos for publication. **No submission is too short, really. Even if it's just a paragraph or two, send it in!** Longer features are certainly welcome as well. All submissions must be digital, and all images must be submitted at their highest available resolution.

Submission deadlines are always the first Friday of the month prior to the newsletter issue (i.e. deadline is in May for the June/July issue). Send all submissions or questions to the copy collection editor. For information on advertising in *the Profile*, contact the newsletter advertising manager.

The Profile is a publication of the White Mountain Chapter, BMW CCA, Inc. ("the club") and its contents remain the property of the club. All information furnished herein is provided by the club and its members, for club members only. The club assumes no liability for any of the information contained herein. The ideas, opinions and suggestions expressed in this newsletter are those of the authors and no authentication is implied. Unless otherwise noted, none of the information in this newsletter is "factory approved." Modifications within the warranty period of your BMW may void the warranty. Permission is hereby granted to reproduce any material published herein provided full credit is given to the author and the White Mountain Chapter, unless otherwise noted. Courtesy copy to WMC requested. The Profile is published under contract by mjc.design.works, LLC, 195 Little Bay Rd., Newington, NH 03801, printed by UniGraphic Inc., 110J Commerce Way, Woburn, MA 01801, and mailed from Manchester, NH.

**BMW: Freude Am Fahren
Add Friends for More Freude**

by: David Harrison, WMC president

As the old song goes, "You got to have friends." We know friends enrich our lives, are there when we need a hand, and statistically even help us live longer. The more the merrier I believe!

How do we discover new friends? Psychologists reason that a potential friend is anyone who has at least two things in common with you. For example, have you ever been in line at Starbucks the world and spot someone with your alma mater's logo emblazoned on their shirt? You can conclude this person likes good coffee and is loyal to your school. (Bam! -instant friend material just waiting for an introduction). The same goes for anyone in the local park with a dog the same breed as yours. Neighbor plus a cute dog sets you up for a new BFF, just like in Disney's classic showpiece 101 Dalmatians.

Share your passion, make friends.

So what is my point here? YOU are most likely the proud owner of a BMW or MINI, and YOU are a BMW CCA member who actually is interested enough in the White Mountain chapter to read this column. That makes you a potential friend for over 600 other members here in New Hampshire! -Maybe even 100 times that number if you consider the club nationally. While those numbers may be overly optimistic, I challenge you to find a few

good folks in the club who share your passion for BMWs or MINIs – and trust me, it's certainly not a tough challenge. I know I personally benefit regularly from my efforts to do so.

So grab your car keys and come on out to a chapter meeting (with free food!), or any scheduled event, or check out our social media connections and let the mutual experience begin. I think you will be better off for your involvement because you can never have too many friends.



A great combo meal.

David



Check us out online!

WhiteMtn-BMWClub.org





978-388-7769

TurnerMotorsport.com



We are your #1 Source for
all BMW Parts & Service
Performance & Replacement.

Experience the Turner Motorsport difference today. Shop the website, give us a call or visit our full service facility and showroom.

Showroom hours: Open Monday-Thursday 9-6pm Friday 9-5pm
16 South Hunt Road | Amesbury, MA 01913 | Right off 495 Exit 54



Chapter Membership

Driving season never really ends

by: Michael Morin, WMC membership chair

As I compile this membership column, I look back at this driving season's events, I wonder where our member's Bimmers and Beemers take them. My family has, between our X3 and our Prius Plug-in, driven to Montréal, Yankee Candle Factory, IKEA and daily trips to work in Cambridge. You'd be surprised how many flat-packed boxes (dining room table and 6 chairs, secretary desk and coffee table) we fit in the Prius. The X3 has been the work horse for moving smaller furniture (entertainment unit, end tables, kitchen island, etc.). What have you been doing all summer? Have you been on the track with us? Road trips? Work? Share your stories with us!

On the membership news front, the White Mountain Chapter has had a loss of 7 members since the last issue of The Profile. We have 566 primary members, 88 associate members and 10 LIFE members for a total of 664 members. Out of those, 633 of our members reside in New Hampshire. Locally speaking, Hillsborough County has 34% of the membership and Rockingham, 33%. Nashua is the city with the highest concentration of members with 52. Bedford is next with 30. Rounding out the top 10 are Manchester, Hollis, Amherst, Concord, Merrimack, Windham, and Dover.

Did someone say Pumpkin Ale?

Michael

DON'T LOSE OUT on your membership rewards on your new or CPO BMW purchase!

Get your REBATE application in TODAY!

There is NO exception to the 60 day limit!
(from official date of sale)

For more info go to BMWCCA.org
keywords: membership rewards

Check us out online!



www.WhiteMtn-BMWClub.org



Welcome!
to our newest
White Mountain Chapter members

Christopher Hegarty	*	Hooksett
Joe Socha	*	Londonderry
Dmitry Iskhakov	*	Nashua
John Cronin	2013 335xi	Peterborough
Todd Rosseau	*	Newburyport, MA
Frank Sledjeski	*	Bedford
Lance Meyer	*	Greenland
Jeff Kipperman	1987 325i	Bow
	2002 525ti	
Jared Saulnier	*	Portsmouth
Scott Silva	*	Weare
Jamey Everest	*	Dover
Jason Fuller	*	Fremont

Fewer emissions. More choice.
BMW

Roll Call

Cover shot eye candy

by: Michael Morin, Eileen Scullin

Eileen Scullin is the owner of this 2013 BMW Z4 sDrive 35i. This car was purchased in the spring of 2013 from Tulley BMW in Manchester, NH. The exterior color of the vehicle is Space Gray Metallic with a Beige interior.

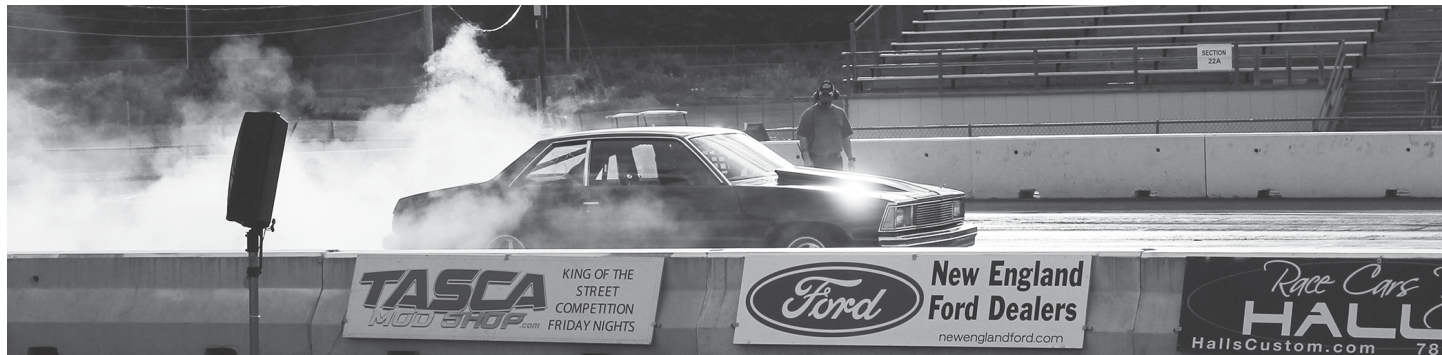
Eileen is currently a student at New Hampshire Institute of Arts working toward a fine arts degree in Photography. This photograph was part of a portfolio of sport and muscle cars developed in the fall of 2013.

If you would like to be featured here with your Bimmer/Beamer please contact Michael: m.morin@whitemtn-BMWclub.org. If you would like it considered for the cover please send it to: editor@whitemtn-BMWclub.org.



Street Night at New England Dragway Unexpected Straight Away Fun

by: Pete McDonough



For as much as I love all things automotive, drag racing has never really piqued my interest. Maybe it's the short duration of the race or the lack of turns – maybe I just didn't see the point. But as with many things motorsport, I was reminded that it can be so much more fun to do than it is to watch.

I've known about New England Dragway in Epping for several years now – the facility has actually been there for nearly 50 years – but given my indifference to the sport, I never really gave it much thought. However, I seem to have turned my new role as copy collection editor for the Profile into an excuse to investigate all things automotive in the Granite state. After poking around on their website, I learned that the facility hosts Street Night which is an opportunity for anyone off the street to race their car down the quarter mile strip. This event is held on most Wednesday and Friday nights during their April – October season. So I called my friend Tony, a longtime auto enthusiast and industry insider (he runs US operations for Jaguar parts specialist SNG Barratt) to see if he wanted to check it out. Of course, he agreed without hesitation.

So when the work week drew to a close and Friday night arrived, we shared the ride to Epping in Tony's supercharged 2013 Jaguar XF. Even if the park had been closed, the 30 minute ride would have been well worth the time. The XF seats you in the lap of luxury – and the lap of 470 ponies who's burble from the 5.0LV8 is nothing short of beautiful... but I digress. After arriving at the dragway and paying a negligible entrance fee, we found seats in the stands amidst the smoke-filled air and the smell of burning rubber. Inside of 30 minutes, we'd choked down a few hot dogs and seen a dozen or so vehicles tear up the quarter-mile strip in as little as 11 seconds and reach speeds in excess of 120 mph. Purpose built hot-rods, café-racers, a Cadillac CTS, a tricked out Ford Focus, a Subaru WRX – you name it we saw it. There was even a snow-mobile, who's front skis had been replaced with rollers. This thing clocked in near 150mph!

I'm not sure exactly what triggered the question, but Tony asked "What do you say? Shall we have a go?" Yet another question to which the answer came without hesitation. So we ventured back to the front gate and upgraded our \$10 spectator tickets to \$25 participant tickets. \$25!?! To drag race as many times as you wanted in a four hour window? Seriously? There's got to be a catch, right? Nope. Pretty good entertainment value if you ask me.

So we signed the obligatory waiver, passed through the tech inspection, belted in and got ourselves in queue. As we made our way to the start line, the track attendant tapped on the window and asked with a smirk "Shouldn't you guys be going to the office?" - inferring the Jag was maybe a bit out of place. Tony politely explained that she was a bit of sleeper and

actually put down quite a bit of power. The attendant smiled and waived us up to the line. After bringing tire temperature up a few degrees and waiting for the last light to turn color, we were off. With the car in 'sport' mode and traction control off, we ran the tach near red-line through as many gears as we could in the distance we had. Wow – that was fun. We crossed the finish line in a hair over 12 seconds - not too shabby for a couple of guys "on their way to the office"!

We got several more runs in before the track crew took a brief break. Given that there were nearly a hundred cars in the queue, it was a good opportunity to walk the line and talk with other folks. I talked with one guy named Dave who drives a truck for a living. Despite being in a rig full time, he spoke passionately about his other daily driver – one of the best looking 335 coupes I've ever seen. He talked me through some of the upgrades he'd made to his car since its purchase – 19 inch M wheels, exhaust, etc – and then we talked about our mutual passion for detailing. For both of us, it's an escape, a form of relaxation and time for us develop a deeper appreciation for the cars we love. Soon enough, the break was over and cars began advancing through the queue again. I love how cars, and BMW's in particular, bridge gap between people and provide ways for us to connect.



Dave and his none-too-pokey 335 coupe.

So here are a couple of takeaways from my little adventure:

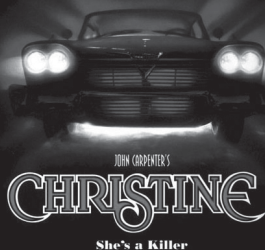
Go to New England Dragway – not only because they advertise with the Profile (see page 12), but because I promise you'll have some serious fun – especially if you get on the track.

Go try something new – whether it's automotive related or not – you'll have fun expanding your horizons.

Look for common ground to connect with others – it's especially easy when it's a shared passion for BMW's!

All BMWs Have Soul Some Have a Life of Their Own

by: David Harrison



before the other bulb quit so I had to turn around and go back for a second bulb. Coincidence or some sort of premeditated prank by my BMW?

This was not the first time I had experienced some sort of artificial intelligence resonating from under the hood. Take for example the 525 who liked to disable the stability control only when it snowed or rained. Was it a humidity induced malfunction or did the car just like to scare me with wheel spin at the worst time and in the most awful weather?

Another incident was the day my 535 and I were on the way to a Corvette car show one sunny afternoon. Apparently, not wanting to mingle with the Corvettes, my ride threw a belt going down I-90. Fortunately, I was close enough to an exit to pull off before anything overheated, but after letting the car cool down and installing the spare belt it had become too late to continue on to the show. We were back home and in the garage before dark.

Does your BMW have a sense of humor? Not in the same way George Carlin meant when he asked, "Why do we drive on parkways and park on driveways?" I mean in more of an indirect way. For instance, the time I drove to buy a replacement bulb for a burned out front turn signal. After leaving the store I went less than five miles

I should have suspected what was happening when my first BMW, a 320i, showed itself to be a prankster. Rachele and I took our new car to Denver for a first road trip. We enjoyed a beautiful day tolling around town. At the end of the long day we settled into our motel room, but our BMW suffered some separation anxiety. About midnight the little car turned on the hazard lights and set off the alarm. Nothing would turn off the lights until I pulled the switch out of the dash and assured the car we would be right inside if it needed anything. We all slept through the night after that.

At the end of the long day we settled into our motel room, but the BMW suffered some separation anxiety.

That same 320 never liked being too hot. Sometimes she refused to start on very hot days. Once started, it reluctantly gave up any cooling from the AC in protest to being run on such a sizzling day. The car saw to it, that if it was to be out in the heat,

so was I. As if that was not enough, on an especially hot day the heater came on at full blast as the valve stuck full open while we were 400 miles from home. I did manage however to buy a clamp at Home Depot and shut off the heat until I returned home.

Keep in mind the next time you have a "coincidental" occurrence that makes you feel silly, annoyed or even embarrassed, your BMW may just be having some "fun" at your expense.

Remember the thriller movie Christine? (John Carpenter, 1983) Just a thought that came to mind. Not implying anything about David, or his cars. —ed.

in the rear view mirror



well at least a small part of it.

The Library, Archives, and Museum Program (LAM) has created a repository for BMW-related historical documents, literature, and paraphernalia, providing the public with access to rare and interesting BMW artifacts while ensuring their continued existence. This archive is housed in Greenville, South Carolina near the BMW CCA National Office and BMW Manufacturing.

Our growing Archives, Library, and Museum needs your tax-deductible donations.

See our website for more info.

Join the Drive to Donate!



▶ www.bmwccafoundation.org

864.329.1919

Vintage Sports Cars Return to the Berkshires in Grand Fashion VSCCA Vintage Rallye Tour 2014

by: Ed Hyman, VSCCA



Mark your calendars, October 24-26, the VSCCA Rallye Tour returns! Yes, it's happening right around the corner, but if you don't delay, you can still get in on the action.

The VSCCA Rallye is an unbelievable conflux of classic sports cars meandering through breathtaking scenery of western Massachusetts. The rallye is open to VSCCA members *and new friends* in their street legal vintage sports cars – so feel free to forward this information to vintage sports car loving friends. If you have a vintage sport scar we would love to have you join us!

We are proud to say that VSCCA Vintage Rallye Tour is one of the few VSCCA events where there is time to relax and visit and really get to know one another.

On Friday evening, October 24th, we will gather in Stockbridge, MA, at the Red Lion Inn. After check in, there will be an informal visit at 7:00 in the pub. Saturday (around 9:00 am) we will meet for a short drivers meeting and then head off in our cars over beautiful Berkshire County roads.

We will travel over small country roads and some larger ones, but strikingly beautiful nonetheless, for about 100 miles. With a stop at Donovan Motorcar Service for a tour we'll then have an informal lunch on premise and return leisurely afterwards to the Red Lion Inn, all in time for some to go antique shopping, visit a museum or just sit on the porch (or by the fireplace) and share a glass of wine with friends old and new. In the evening there will be a cocktail hour and then a grand dinner. Sunday morning we'll again gather around 9:00, to travel & visit some more until an informal lunch at a great Italian restaurant. We'll close out the event early enough so those who have far off places to journey back home to can make it at a reasonable hour.

If this sounds exciting to you and you'd like more information on how to be a part of it, call me, Ed Hyman, the event coordinator, at 860-355-1804 - late evening always best, or send me an e.mail: edhyman@charter.net



RECARO PERFORMANCE FRICTION BRAKES COBRA
Stilo OMP SCHRÖTH RACING HMS motorsport

If you drive on the track, come see us.
We have what you need.

9A Electronics Avenue - Danvers, MA 01923 - 888.467.3269
www.hmsmotorsport.com

Brands you trust.

LEMFÖRDER

Genuine BMW

BOSCH

BILSTEIN

Best price guarantee • No sales tax

800.535.2002 | BavAuto.com

Parts is Parts

A Word Puzzle for Car Nuts

created by: Martin Callahan

Unscramble the items in the first column and write them in the spaces of the second column. Once unscrambled, use all the circled letters to decipher the hidden phrase at the bottom. Find all the unscrambled words in the bank of letters.

REWSORPOHE	□□○□□□□□□□
SRRIROM	□○□□□□□
TSEILADHHG	□□□□□□□○□□
ESTXUHA	□□□□□□○
QEROUT	○□□□□□
EAILCMT ORNOTCL	□□□○□□□ □○□○□□□□
UEAGSG	□○□□□□
DIKYNE LLIGR	□□□□○□ □□□○□
MUEPBR	□□○□□□
PNNEOUISS	□□□□□○□□□□
OLRNDUE	□□○□□□□
SIIORTNMSNS	○□□□□□□□□□□
LEHSEW	□□□○□□
ESALPD	□□○□□□
DHSODAARB	□□□○□□□□
TEAGFRSIH	○□□□□□○□□
ISOLENAG	□□□□□□□○
KRBSEA	□□○□□□
SNVTE	○□□□□
GEINNE ILO	□□□○□□ □○□

hidden phrase clue:

When BMW puts them all together

○○○ ○○○○○○○○
 ○○○○○○○○ ○○○○○○○○

M	M	G	J	T	P	I	Y	D	Y	F	E	F	C	
W	D	K	I	D	N	E	Y	G	R	I	L	L	R	
E	S	N	O	L	Q	D	W	H	N	H	J	I	E	U
O	E	O	O	E	B	A	Y	O	W	E	M	O	D	W
D	K	I	B	V	W	L	I	R	G	A	B	N	Q	
G	A	S	X	W	E	S	J	S	T	D	C	E	U	N
W	R	S	W	N	N	M	E	S	L	R	N	O	C	
H	B	I	H	E	I	Y	P	U	I	K	I	R	V	
E	R	M	P	B	L	C	M	O	A	G	S	G	E	F
E	E	S	M	D	O	O	I	W	H	H	I	N	P	M
L	U	N	G	N	S	A	R	E	X	T	T	E	M	H
S	Q	A	T	H	A	J	R	R	E	S	Q	H	U	A
B	R	R	C	N	G	V	O	D	L	N	N	B	R	
E	O	T	F	I	H	S	R	A	E	G	B	L	O	Y
L	T	G	A	U	G	E	S	M	A	N	I	W	R	L

about word puzzle:
 Want to see your own word puzzle in the Profile? It's easy! Simply compile a list of approx. 25 words that are BMW/BMW CCA related. Submit them to the copy collection editor and you're done! If you wish, you can include an intro paragraph and a high resolution image for the background. The publication editor will do the rest.

answer key on page 10 ▶

Social Events Committee Retrospective Great Club Events, Past & Future

by: Cassandra Vorisek-Creto, SEC Chair

I have been a member of the club since January 2001. In 2003, I made the decision/leap to become more active within the club, and so my adventure with the Social Events Committee (SEC) began. Over the many years, I have had the great fortune to meet many wonderful people and make many friends all while planning and participating in many exciting events and gatherings. The SEC is much more than just "social"; it combines fun, love of all things BMW and gathering of all walks of people.

I would like to share with you some of the many great adventures, I've had the great pleasure of experiencing through the SEC over the past many years.

Back Roads Rallies

- *New England Seacoast (Newburyport, MA, to Portland Head Light, ME)*
- *Lake Sunapee Region*
- *Haunted Back Roads*
- *New Hampshire Covered Bridges*

BMW NA's Ultimate Drive (2006-2012) - *The SEC assisted both Tulley and Stratham BMW dealerships with the transportation of cars from one dealership to another on many occasions.*

Northeast Exotic Car Show through 2011 - *SEC organized the BMW section of this show*

Bavarian Autosport's Show and Shine - *SEC staffed a booth that attracted many new members to the club*

Holiday Parties/Winter Reunions

Mt. Washington Climb to the Clouds

Hot Laps Go-Karting

Fisher Cats Baseball Games

Kimball Farm (Jaffery, NH and Westford, MA)

Yankee Candle (Sturbridge, MA)

Simon Pearce (Queueche, VT)

Thomas Leighton Cruise Ship to the Isle of Shoals

Tech Sessions at 3D Autoworks

- *Ladies Only*
- *All Members*

Countless 'Drive and Dine' venues

Parkers Maple Barn - *WMC's annual driving season opener in early spring*

Chile dinner - *WMC's HPDE driving season "closer" at NHMS*

The list could go on. To learn more, be a part of or simply to make new friends, come to a SEC meeting and have dinner on us! Hope to see you soon!

2014 Social Events Committee Planning Meetings

Monday, October 20th
Monday, November 17th

The SEC meetings are held at the Common Man restaurant in Windham, NH at 6:30pm.

See the chapter calendar for more information.

Answers to Word Puzzle on page 9



THE ULTIMATE DRIVING MACHINE

Hidden Phrase

ENGINE OIL [13,11,N]
VENTS [15,8,S,W]
BRAKES [2,8,N]
GASOLINE [6,13,N]
GEARSHIFT [11,14,W]
DASHBOARD [1,5,SE]
PEDALS [7,1,S]
WHEELS [1,7,S]
TRANSMISSION [3,14,N]
ROUND [14,8,N]
SUSPENSION [1,12,NE]
BUMPER [14,13,N]
KIDNEY GRILL [3,2,E]
GAUGES [3,5,E]
CLIMATE CONTROL [15,1,S,W]
TORQUE [2,15,N]
EXHAUST [10,12,N]
HEADLIGHTS [11,3,S]
MIRRORS [8,9,S]
HORSEPOWER [9,3,S]

Scramble & Search [Over/Down/Direction]





16 Deer Run Road
Candia, NH 03034
sales@synaptic3.com

MOTORSPORTS • FABRICATION • SPECIALISTS

- AWD Dyno Tuning & Rental
- Engine Management / Cobb Pro Tuner
- Custom Forced Induction Systems
- Safety Cage Design & Construction
- Track Alignments & Corner Balancing
- Fender Rolling

Over 15 years experience with European & Japanese high performance cars
We specialize in unique custom projects for street, track, & rally cars

603 · 244 · 4631

WWW.SYNAPTIC3.COM

MOTORSPORTS • FABRICATION • SPECIALISTS

SYNAPTIC 3 Performance / a division of RAD Motorsports, LLC.

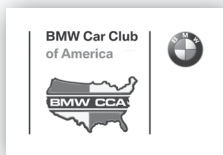
BMW CCA App Gets Update Improved Performance & Functionality

by: John E. Sullivan, North Atlantic Region Vice President BMW CCA

The BMW CCA App has received an update for both Android and iOS. If you haven't already, do check it out.

The app includes easy access to a lot of fun and useful Club information:

- Listing of all upcoming Chapter, Regional, and National events
- Watch Club videos
- Quick access to the BMW CCA website to join, renew, manage your account
- Read Club news
- View Club Facebook and Twitter feeds
- Find Club discounts
- Much more!



German AutoSport

18 Chestnut Street

Amesbury, MA 01913

978-388-1288

www.germanautosport.com

Over 20 years of European car experience

FREE ESTIMATES including computer diagnosis

NOW OFFERING FULL DETAIL SERVICES

2014 WMC Election Season is Here Consider Throwing Your Hat into the Ring

by: David Harrison, WMC president & SEC member

Living in New Hampshire, you could not have missed all the political signs and media commercials regarding the recent primary elections. With much less fanfare your White Mountain Chapter also has elections on the agenda for this autumn.

Our process starts with nominations in October and is followed by elections in November. All members in good standing with the chapter and the BMW CCA are eligible to run for office. So if you would like to enter the race, get more information about an office, or have someone in mind you'd like to nominate for a position, please contact any current board member in person or through the club's contact information (see page 3 or the chapter website).



From the Club By-Laws Article 5. Chapter Elections

Section 1.

Any active member of the club may nominate a member in good standing for an elective office, subject to the nominee's consent to such nomination. An active member is defined as a member of the BMW CCA, Inc. who is assigned to the White Mountain Chapter, and has paid the current BMW CCA, Inc. annual membership fee. Nominations for officers for the upcoming year, will occur during the month of October. Voting will occur in November, and will culminate at the annual December general meeting.

Section 2.

Election of the Board and officers will be by a plurality vote of those active members present at the December general meeting plus those members voting by absentee ballot, or via an electronically facilitated voting process. Each member shall have one vote. Ballots to be collected, confirmed and tallied by the current club Secretary and results announced at the December membership meeting.

Kensington AUTOWORKS

SERVICE AND REPAIRS FOR ALL MAKES AND MODELS
SPECIALIZING IN BMW SERVICE

272 South Road · Kensington NH 03833
(At the Junction of Route 107 & Route 150)

Tel: (603) 394-0081 · Toll Free: (866) 694-0081

WWW.KENSINGTONAUTOWORKS.COM

**Upcoming Events
and Noteworthy Dates for Your Calendar**



www.whitemtn-bmwclub.org/calendar.html

Dates and Times subject to change. Always check the website for most current info.



**Sunday October 5th, 2014
8:00am - 2:00pm
Bavarian Autosport
Show and Shine**

This event promises to be a great day filled with camaraderie, good food, thousands of dollars in free raffle prizes, awards and, of course, lots and lots of BMWs. Held at BavAuto World Headquarters in Portsmouth, NH. Questions? Contact (800) 535-2002. COST: FREE w/ Complimentary Drinks and BBQ, RSVP

**Monday October 13th, 2014 6:30pm - 9:00pm
Chapter Membership Dinner**

Come join us for engaging conversation, camaraderie, and a free light dinner and drinks at our bi-monthly meeting. This month's meeting location is at The Common Man restaurant of Windham. COST: FREE Food and Drinks, RSVP

**Friday October 17th, 2014 through
Sunday October 19th, 2014 8:00am - 5:00pm
High Performance Driving School**
NHMS HPDE - Hosted by the Boston Chapter
COST: Varies, Register NOW! (until 10/12/14)



**Monday October 20th, 2014 6:30pm - 8:30pm
Social Event Committee Meeting**

Join the Social Events Committee in planning for up-coming events. New committee members are always welcome. Meeting location is The Common Man of Windham, COST: FREE Food and Drinks, RSVP

**Friday November 7th, 2014 5:00pm
Profile submission deadline**

All general content (excluding ads) to be considered for inclusion in the Dec/Jan Profile must be received by the copy collection editor. Submissions and questions to editor@whitemtn-bmwclub.org.

**Monday November 10th, 2014 6:30pm - 9:00pm
Chapter Membership Dinner**

Come join us for engaging conversation, camaraderie, and a free light dinner and drinks at our bi-monthly meeting. This month's meeting location is at The Common Man restaurant of Windham. COST: FREE Food and Drinks RSVP

**Monday November 17th, 2014
6:30pm - 8:30pm
Social Event Committee Meeting**

Join the Social Events Committee in planning for up-coming events. New committee members are always welcome. Meeting location is The Common Man of Windham, COST: FREE Food and Drinks, RSVP

**Monday December 8th, 2014
6:30pm - 9:00pm
Chapter Membership Dinner**

Come join us for engaging conversation, camaraderie, and a free light dinner and drinks at our bi-monthly meeting. This month's meeting location is at The Common Man restaurant of Windham. COST: FREE Food and Drinks



**Performance Upgrade
Checklist**

- ✓ Performance Exhaust System
- ✓ High Performance Ignition System
- ✓ High Flow Intake System
- ✓ Performance Chip

Great. But, how much did you gain?

Bring your BMW to New England Dragway's popular Wednesday & Friday Street Night before and after you make those upgrades. Establish a baseline and make sure you're getting the most for your performance dollar.

New England Dragway is conveniently located off Exit 8—NH Route 101 in Epping, New Hampshire. Visit our website www.newenglanddragway.com for more information.



Bring this ad for a \$3 discount on a Wednesday or Friday Spectator ticket!

*more on the **chapter website!***

about chapter calendar:

Registration, RSVP, travel directions, and details for all listed events are on the chapter website.

High performance driving schools have special advance requirements.

Contact the advertising manager for ad submission deadlines.

BMW CCA Day at Larz Anderson Museum- August 10th History & Evolution, Performance & Shine, and of Course - Tiny Wads of Cotton

text by: Roland Beale

photos by: David Harrison & Johann Wrede



DH



JW



JW



JW



DH



JW



JW

It was to be another beautiful August Sunday in New England. So I cleaned up the 328xi and headed to the Larz Anderson Museum in Brookline, MA.

Arriving early at 8:30am guaranteed me a good spot. Registration was easy with a choice of either concourse judging or display only, my car being my daily driver, I of course I picked 'display only'. After parking we set up our chairs in a nice shady spot behind the car, - a perfect spot to watch the beautiful Bavarian autos roll in, and they did, from the time I got there through the early afternoon.

Dirt could not hide from the judges and their denigrating Q-tips

The concourse judging area filled up with about 60 or so of the cleanest BMWs I've ever seen. Examples of everything were on display from a new M4 back to a very nice and rare 2002ti touring. Some other notable cars were a Z1 and an M1. Judging was interesting. I watched the intent judges go at engine compartments and cabins with Q-tips in search of any morsel of dirt. Each participant was given two people's choice voting ballots; one for 'concourse' cars and the other for 'display only' cars. My personal choice for 'display only' was a stunning black E9X M3 with a truck load of Dinan goodies, and for the judged cars I chose a super clean Blue Z4 M Coupe.

The backdrop for this excellent showing of German goodness was the castle-like building that is the Larz Anderson Museum. Walking in the front door I was greeted with old world charm. A perfect setting for a car museum. On display were a Fisker, an Audi race car and many others all the way back to an example of the first purpose built race car.

Hamburgers, hotdogs, sausages and chicken were catered. Very good food for not a lot of money. Thanks to the Boston chapter for hosting this great event, and to Wagner BMW and Import Auto Werks for sponsoring it.

Great weather helped make for a great car show too. It was nice to meet up with old friends and meet new people and hear about their Bimmers. The museum has an extensive schedule of lawn events throughout the summer. If you missed this one check, out one of the others, and come next August if you find yourself in the Brookline area and want to check out some fine examples of German automotive engineering stop by this annual event. For the exact date, be sure to check next year's schedule. Hope to see you there.



HD



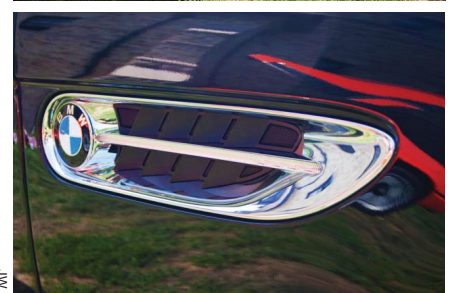
AMC



AMC



AMC



AMC



AMC

From One Garage to Another Cars and Parts, Wheels and Deals

www.whitemtn-bmwclub.org/classified_ads.html

Availability and details subject to change. Always check the website for most current listings.



Parts for Sale

Bridgestone Potenza 225/45R17 Run Flat Tires



Set of four. Excellent condition with tons of life left in them. Perfect to replace your worn tires if you have a lease to turn in! \$100 for all four. Call Alan Legerlotz at 603-582-9379 or e.mail Alan via the chapter website.

Semperit Snow Tires 205/55R16

Partial set, three Semperit snow tires, sized 205/55R16. Fit E46 3 Series. Lots of life left in them. \$45 for all three tires. Call Alan Legerlotz at 603-582-9379 or e.mail Alan via the chapter website.



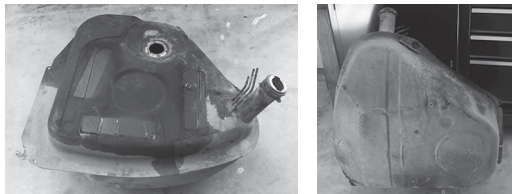
Original BMW E46 Sport Pkg. Wheels & Tires

Five 17x8 wheels & 225/45R17 Bridgestone tires. One wheel & tire is new, never been on car. One wheel has slight road rash, other four are perfect. Will fit E36 & E46. \$800 for the whole set. Call Arnold Koch at 603-523-9637 or e.mail Arnold via the chapter website.



Used Gas Tank from E28

Has some rust particles inside; no rust on exterior. Good candidate for clean and interior coating. Came off my '88 M5 (NM car until earlier this year). Asking \$50. Call Mark Tassinari at 603-913-4047 or e.mail Mark via the chapter website.



BMW 3 Series Wheels



These 17" BMW OE wheels came off a 2003 325i sport; good condition with only minor curb rash on two of the wheels. Currently shod with 225/45R17 tires, the wheels will realistically need new tires as they are approaching the wear bar. \$275 Call Pete McDonough at 978-210-2841 or e.mail Pete via the chapter website.



E90/92/93 Wheels with Snow Tires

Four winter wheels from my 2011 328i. The wheels were bought for winter and are OEM BMW wheels with no blemishes and have Blizzak snow tires on them. Approximately 15K miles on the tires. \$500. Call Alan Legerlotz at 603-582-9379 or e.mail Alan via the chapter website.

Moda M1 wheels for E32/E38 7 Series



Moda M1 wheels used on my E32 and E38 7 Series cars. Wheels are in good condition with pretty worn out tires still on them. Wheels are FREE, but you must take them with the tires. Call Alan Legerlotz at 603-582-9379 or e.mail Alan via the chapter website.

Wheels for E85/86 Z4

Factory Wheels for E85/86 Z4. Three in good condition (not excellent), one in fair condition. No tires on them. Great for winter wheels. \$50. Call Alan Legerlotz at 603-582-9379 or e.mail Alan via the chapter website.



about classifieds:

Chapter members can submit (non-commercial) ads at no cost, which will run for three months on the website. Ads listed on the website at the time of publication are published in *the Profile*, space permitting. (Submit photos for inclusion with printed classifieds to *the Profile*'s copy editor.) Ad requests submitted online are subject to approval by the WMC. The submitter, not the WMC, is responsible for the accuracy of ad content. The WMC cannot guarantee, in any manner whatsoever, items listed in the classifieds. To see the most current selection of classified ads, check out the chapter website.



AUTO WORKS, INC.

Your independent service facility since 1988

specializing in

BMW & MINI

quality service

*BMW or MINI,
road or track,
vintage or new,
always ready to meet
your automotive needs*



- Pre-Purchase Inspection
- Routine Maintenance
- Major Service & Repair
- Performance Upgrades
- Alignment Services
- Detail Services
- Pre-Track Inspection
- Race Car Preparation

*many years of solid experience
always up-to-date technical training
latest in diagnostics equipment*

Proud members of:



603.882.3400 • www.3dautoworks.com
One Industrial Drive • Route 111 • Hudson, NH 03051

For the Love Of Your Automobile
 Expert BMW service and repair with 45 years of combined craftsmanship.



- Over 7,000 square feet of space
- Custom Fabrication
- Chassis Dynamometer testing & vehicle calibration.
- Selling, Maintaining
- Founded on a family business that started in 1952.
- Enclosed Car Transportation

KMC
 Kachel Motor Company

425 Canal Street
 South Lawrence, MA

(617) 759 8973
 www.kmcauto.com

BMW Car Club
 of America
 White Mountain Chapter



BMW Car Club of America
 White Mountain Chapter
 P.O. Box 304
 Londonderry, NH 03053

PRESORTED
 STANDARD
 U.S. POSTAGE PAID
 MANCHESTER, NH
 PERMIT 420



www.whitemtn-bmwclub.org

VSR
 www.VSR1.com
Celebrating 10 years of specialty service!



Vintage Sports & Racing, llc

Authorized Dealer for:

*TC Kline - Recaro/Cobra/Momo/Sparco Seating
 Bilstein & Koni Shocks - Redline Lubricants - Schroth Racing Safety Equipment*

Routine Services including:

- Inspection I & Inspection II*
- Computer Diagnostics*
- Cooling & AC System Service*
- Suspension Service*
- Brake System Service*

603.228.2888

INFO@VSR1.com

3 Robinson Rd. Bow, NH

