

the Profile

newsletter of the
white mountain chapter BMW CCA



**BUILDING
A DREAM**

Over 20 years of BMW experience
OFFERING BMW AND MINI OWNERS THE UNCOMPROMISING SERVICE AND ATTENTION TO DETAIL FOR THEIR HIGH PERFORMANCE VEHICLE

PRECISION BMW REPAIR



WINTER/SUMMER STORAGE

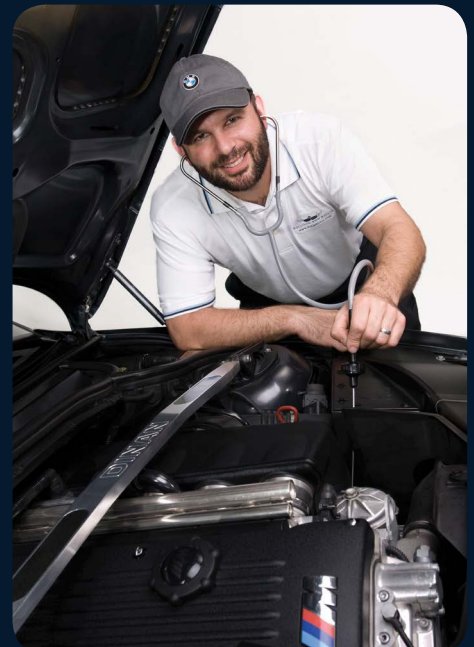


SERVICES INCLUDE

- Inspection I and II
- Wheel Straightening
- Track Inspections
- Pre Purchase Inspections
- Oil Change Loyalty Program
- Computer Diagnostics
- Brake and ABS System Repairs
- Performance Upgrades
- Paintless Dent Removal
- Low Profile/Run-Flat Tire Inst.

1 MILE FROM RT.101

OPEN WEEKDAYS & WEEKENDS



BMW LOANER CARS AVAILABLE

WWW.BIMMERCARS.COM | 978-384-0BMW (0269) | BMWREPAIR@COMCAST.NET
25 COMMERCIAL DRIVE UNIT 1A BRENTWOOD, NH 03833





**BMW Car Club
of America
White Mountain Chapter**

contact officers or staff members
via the chapter website

www.whitemtn-bmwclub.org

president David Harrison	membership chair Michael Morin	marketing & sponsorship director Dana Sion advertising@whitemtn-bmwclub.org	newsletter copy collection editor Pete McDonough editor@whitemtn-bmwclub.org
vice president Dana Sion	driving events committee chair Mark Viola	newsletter advertising manager Dana Sion advertising@whitemtn-bmwclub.org	newsletter publication editor Martin Callahan mjc.design.works, LLC
secretary Roland Beale	social events committee chair Cassandra Vorisek-Creto		
treasurer Johann Wrede	web masters Dick Demaine Johann Wrede		

in this issue

- 3** chapter officers and staff
- 4** address from the board
- 5** chapter membership
- 7** the knucklebuster
 - » A Comfortably Aged Cap
by: David Harrison
- 8+** the passion that drives us
 - » Club Motorsports - Part 1
by: Pete McDonough
- 8+** word puzzle
 - » Slippin' & Slidin'
by: Martin Callahan
- 11** news
 - » Street Survival Circle of Excellence
- 12** chapter calendar
- 13** news cont.
 - » Lockton Affinity Motorsports
 - » BMW CCA Day at Lime Rock Park
- 14** classifieds

on the cover

original photo by: Club Motorsports
post process by: Martin Callahan



If you build it, they will come...

A performance driver's paradise in New Hampshire's picturesque White Mountains - Valley Motorsports Park will soon be a state-of-the-art 2.5 mile road course with 15 turns, 250 feet of elevation change and many amenities including two large paddocks, first-class road-side condo garages and an almost half mile long karting course thrown in for added fun. Scheduled to open September 2015.

about the Profile:

The Profile is published every two months. Club members are encouraged to submit BMW and/or club related articles and photos for publication. **No submission is too short, really. Even if it's just a paragraph or two, send it in!** Longer features are certainly welcome as well. All submissions must be digital, and all images must be submitted at their highest available resolution.

Submission deadlines are always the first Friday of the month prior to the newsletter issue (i.e. deadline is in May for the June/July issue). Send all submissions or questions to the copy collection editor. For information on advertising in *the Profile*, contact the newsletter advertising manager.

The Profile is a publication of the White Mountain Chapter, BMW CCA, Inc. ("the club") and its contents remain the property of the club. All information furnished herein is provided by the club and its members, for club members only. The club assumes no liability for any of the information contained herein. The ideas, opinions and suggestions expressed in this newsletter are those of the authors and no authentication is implied. Unless otherwise noted, none of the information in this newsletter is "factory approved." Modifications within the warranty period of your BMW may void the warranty. Permission is hereby granted to reproduce any material published herein provided full credit is given to the author and the White Mountain Chapter, unless otherwise noted. Courtesy copy to WMC requested. The Profile is published under contract by mjc.design.works, LLC, 195 Little Bay Rd., Newington, NH 03801, printed by UniGraphic Inc., 110J Commerce Way, Woburn, MA 01801, and mailed from Manchester, NH.



I regret to inform, our passionate president David fell victim to the Polar Vortex, or was it maybe too much spiced egg nog over the past weeks? Either way, he sends his apologies that he couldn't make it in on time, but promises to be here for you on this page next edition. Until then, keep some sand in your trunk, your washer fluid tank full and a smile on your face despite the weather. - ed.



978-388-7769
TurnerMotorsport.com



**We are your #1 Source for
all BMW Parts & Service
Performance & Replacement.**

Experience the Turner Motorsport difference today. Shop the website, give us a call or visit our full service facility and showroom.



Showroom hours: Open Monday-Thursday 9-6pm Friday 9-5pm
16 South Hunt Road | Amesbury, MA 01913 | Right off 495 Exit 54

Chapter Membership

What drives you?

by: Michael Morin, WMC membership chair

Many people ask what I drive. When I say that my daily driver is not a BMW they look confused. The vehicle I drive is more out of necessity. It's not what drives me. Do you drive because you need to or is it reversed? Performance, handling, comfort, efficiency ... or is it the marque? There is no right answer. Why not join the conversation? Tell us at:

<https://www.facebook.com/whitemountain.bmw.club>

On the membership news front, the White Mountain Chapter has had a gain of 7 members since the last issue of The Profile. We have 582 primary members, 97 associate members and 10 LIFE members for a total of 689 members. Out of those, 652 of our members reside in New Hampshire. Locally speaking, Hillsborough County has 34% of the membership and Rockingham, 33%. Nashua is the city with the highest concentration of members with 53. Bedford is next with 33. Rounding out the top 10 are Amherst, Windham, Manchester, Hollis, Merrimack, Concord, Merrimack, Salem, Stratham, and Dover.

Chiseling the ice buildup from the wheel wells,

Michael

DON'T LOSE OUT on your membership rewards on your new or CPO BMW purchase!

Get your REBATE application in TODAY!

There is NO exception to the 60 day limit! (from official date of sale)

For more info go to BMWCCA.org keywords: membership rewards



One More Thing...

by: Michael Morin

Can't remember your renewal date? Why not renew with a 3-year membership? For all up-to-date membership options and any questions please call toll free 1-800-878-9292.

Type	1 Yr	2 Yrs	3 Yrs	5 Yrs	LIFE
Primary	\$48.00	\$91.00	\$134.00	\$220.00	\$1,000.00
Associate	10.00	20.00	30.00	50.00	155.00
Additional Chapter	15.30	30.60	45.90	76.50	
E30 M3 SIG	15.00	30.00	45.00	75.00	
Club Racing Digest	15.00	30.00	45.00	75.00	



Welcome!
to our newest
White Mountain Chapter members

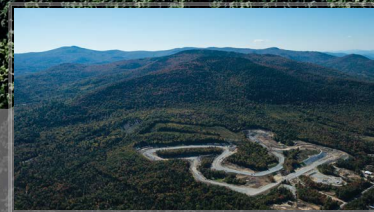
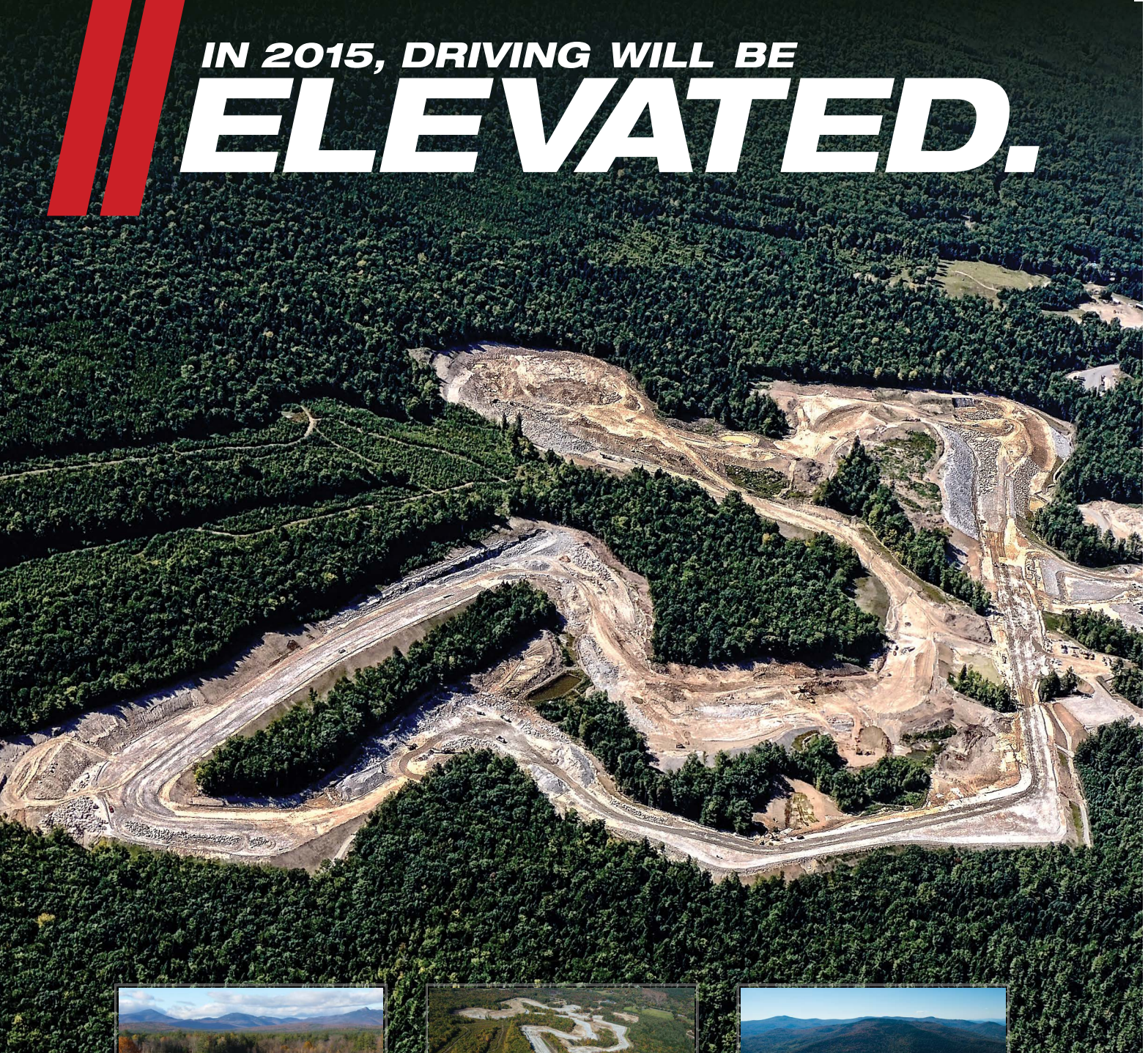
Tom Cottrill	New London
Laura Londrigan	Hampstead
Benjamin Londrigan	Hampstead
Sophie Czerwinski	Gilford
Mark Gigliotti	Londonderry
Stephen Hedberg	Dover
Emma Klapka	Amherst
Andrew Knight	Waterville Valley
Mikayla Long	Bedford
Julie Sanders	Windham
Noah Penkacik	Amherst
Corey Knight	Nashua
Scott Hochgraf	Bow
Zach Kuster	Hopkinton
John Stowell	Hollis
Chris Pearson	Hooksett
Lisa Mullane	Salem
Mike Ward	Hooksett
David Moore	Holderness
Alexis Chilton	Hollis
Michael Bloomer	Wolfeboro
Claire Durfee	Salem
Michael Durfee	Salem
Kyle Johnson	Laconia
Nicolas Kelley	Nashua
Sean Kohlbrenner	Hooksett
Zoe Lombardo	Pelham
Jack Michaud	Bedford
Natisha Mills	Nashua
Wildes Morgan	Derry
Dan Pleva	Londonderry
Pheonyx Stopyra	Merrimack
Justin Trickett	Londonderry
Matthew Williams	Bedford
Terri Foye	Manchester

Check us out online!



www.WhiteMtn-BMWClub.org

IN 2015, DRIVING WILL BE **ELEVATED.**



Private Road Course

- 2.5 miles - fast, challenging, safe
- 15 turns with 250' of elevation changes
- Mountain setting with incredible views
- State of the art timing and video systems

Membership Privileges

- Multiple membership levels and options
- Professional driving instruction
- Clubhouse and dedicated karting course
- Secure car storage and private garages

Opening Fall 2015!



Club Motorsports
clubmotorsports.com

Jim Hoenscheid - jimh@clubmotorsports.com (603) 986-9802

See for yourself: [YouTube](#) [f](#) /ClubMotorsports

A Comfortably Aged Cap Good for Your Head, Not Your BMW

by: David Harrison, President



When I buy a BMW, I buy used but not abused examples of the marque. This keeps me in my price range which is less than half of the original sticker price. The trade-off is that even the best maintained car will need a thorough refreshing once it is mine.

Typically the initial inspection reveals a few mechanical items needing attention (brakes, tires, wipers, etc). Cosmetic items are the next assortment to correct (new floor mats, paint chips, missing cigarette lighter, and such). Finally, like most gearheads, I go for the preventive items. Regardless of assurances from the previous owner or dealer I like to replace all the fluids with fresh products. An oil change is a must along with coolant, transmission, differential(s), brake, and even power steering fluid drained and refilled. A Bentley manual and online videos from Bavarian Autosport are my favorite source of information. The guys at BavAuto also make sure I order the correct quantities of fluids.

Ignoring your caps could leave you broken down or worse

This leads me to the topic of this article. I have learned to replace old caps because they most likely are the still the originals which came from the factory. Caps allow access to various reservoirs and depend on rubber gaskets to keep a proper seal. Back in the day, Driver's Education told us to look at rubber belts, hoses, and gaskets because they age and deteriorate. Ignoring these would leave you broken down or worse. So we need to consider caps also because they have rubber gaskets. If you believe in preventive maintenance, read on.

The caps I am noting are 1. gas cap, 2. oil fill cap, 3. radiator cap, and 4. power steering cap. All these should be changed out if your car has reached a certain age (maybe 4 or 5 years). The foursome only cost me \$59 for OEM parts. This is cheap insurance and it takes no expertise whatsoever to accomplish the swap. As a bonus I found the M Sport oil cap fits my engine and cost the same as the standard part.



The caps: oil, gas, power steering, radiator

Why swap? The gas cap and oil fill cap keep your engine and fuel system sealed at negative pressure. This is to protect the environment. More importantly (to me anyway) is that a good seal makes the engine computers happy, and meters fuel & air correctly, while ensuring the "check gas cap" light stays off. The radiator cap does just the opposite and keeps pressure in. More accurately it maintains the correct positive pressure. An old radiator cap may or may not release pressure if the hot fluid expands too much. This could lead to failure of other components like the hoses and engine gaskets.

Finally, do not overlook the power steering fluid cap. This cap is not as



One of the few M Sport parts that cost me the same as the standard part.

critical as the other three, however, as it ages it lets fluid leak out of the reservoir making for a mess. While this is not dangerous, you can simply change out the o-ring on the cap for a few dollars, (ditto the o-ring seal on the oil dipstick which can deteriorate and fall into the tube).

So the next time you need to order car parts consider getting new caps and possibly save yourself some serious grief later on. It may be the easiest preventive maintenance you ever do.

Brands you trust.

LEMFOERDER

MANN
FILTER

HELLA

Genuine BMW

brembo

BOSCH

BILSTEIN

Best price guarantee • No sales tax

BAVARIAN
autosport

800.535.2002 | BavAuto.com

Club Motorsports - Part 1 Grit & Passion Building a World-Class Facility

by: Pete McDonough photos: Pete McDonough & Club Motorsports

Pete enthusiastically expressed an interest in doing regular investigative writing for the Profile, so here with the first installment of his new column, the passion that drives us, he gives us insight to the latest developments at Club Motorsports. Look for more of his passion driven reporting in editions to come. Thanks Pete! -ed.

Let's face it, we live in a world of instant gratification fueled by gigabit connections to the internet. We can find the answer to nearly any question, see satellite imagery of remote locations and listen to the music of an obscure artist all with a few key strokes. Today's notion of "wait for it..." is spoken in the context of milliseconds or, heaven forbid, seconds.

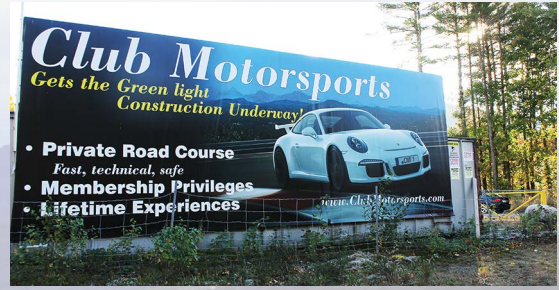
But what happens when we want something - really badly - that's not readily available? What happens when the thing we want is just a vision in someone's mind? What happens when it needs time, energy and lots of resources to bring it to life and we have to wait for it - I mean really wait for it? These are some of the questions that I sought answers to when I spoke with some of the folks at Club Motorsports regarding their Valley Motorsports Park project in Tamworth, NH. You see, they know a thing or two about waiting for it. They're nearing completion of a 13 year journey to conceive, plan and build a unique, world-class motorsport country club in this great state that we call home.

I remember conversations a decade ago of a private course that was going to be constructed somewhere in NH. These same conversations popped up over the years but details were always vague so it re-

**Man...
this place is
going to be
AMAZING!**

mained elusive - at least to me. However, this past summer I was talking with someone who runs in those circles of folks with a passion for driving and enough disposable income to have legit track cars. He explained that the elusive course was actually happening and that his friends were considering a membership. Curiosity got the best of me so I got onto the internet with my gigabit connection and what do you know... this thing is really happening! It's under construction now and they're opening in less than a year! As I've mentioned in other articles, my role as copy collection editor has given me license to investigate all things automotive and this was no different - especially given that the project has "Blau mit Weiss" running through its veins.

After a couple of e-mails and a phone call or two, the 3 Series and I were headed north on a crisp October afternoon to get the inside story on Valley Motorsports Park. Before arriving, I perused their Facebook page to see the pictures and video that illustrate the course and the beauty of the surrounding area. But as I arrived at the facility and got out of my car, I



Billboard at the park entrance on Rt. 25.

photo: Pete McDonough

background image:

The view coming out of Turn 6

Slippin' & Slidin' A Word Puzzle for WMC Winter Drivers

created by: Martin Callahan

Unscramble the words in the first column and write them in the spaces of the second column.

The puzzle title is your only clue.

Once unscrambled, use all the circled letters to decipher the hidden phrase at the end.

Find all the unscrambled words in the bank of letters.

about word puzzle:

Want to see your own word puzzle in the Profile? It's easy! Simply compile a list of approx. 25 words that are BMW/BMW CCA related.

Submit them to the copy collection editor and you're done! If you wish, you can include an intro paragraph and a high resolution image for the background. The publication editor will do the rest.

IDZLZABR
 ZFEINEGR
 EHARTE
 RTOLSDAAT
 DISK
 USLHS
 SBSUNROWH
 LKICEBAC
 OERTRSFDE
 EEATESSTDA
 CAECEPIRRS
 AONDSAR
 TESEL
 NWSO
 RNISOWSTE

□	□	□	□	□	□	○	□	
□	□	□	□	□	□	□	○	
□	□	○	□	□				
□	□	□	○		□	□	□	□
□	□	○	□					
□	□	□	□	□				
□	○	□	□	□	□	□	□	□
□	□	□	□	□	□	□	○	□
□	□	□	□	□	□	□	□	□
○	□	□	□	□	□	□	□	□
□	□	□	□	□	□	○	□	
□	□	○	□	□				
□	□	□	□					
□	□	○		□	□	□	□	□

photo: Pete McDonough



Jim Hoenscheid and the view looking down over the front straight from the location where the clubhouse will sit.

course's front straight stretched out nearly half a mile wide before me and the mountainside rose quickly behind it, awash in the glory of fall colors. As I admired the surroundings, a voice inside my head thought "Man... this place is going to be AMAZING!" This was followed by another voice saying "Hi - you must be Pete." As I snapped back to reality, I turned to find the outstretched hand of Jim Hoenscheid, President of Club Motorsport.

Jim is a Kentucky native with an enormous grin and a hospitable personality to match. A sales and marketing veteran with stints at Lycos and Valvoline, Jim came to CMI

Breathtaking natural beauty created by the course's 250 feet of elevation change over 2.5 miles and 15 turns all against amazing panoramic mountain backdrops.

realized during the early days to serve as VP of marketing but was promoted to the role of president in 2006. While his main focus is driving the organization that and all its partners toward completion of the facility, Jim is still heavily involved with marketing and public relations – the latter of which involves site tours on four-wheelers with inquisitors like myself. Now I'm starting to understand why he wears such an enormous grin.

Before starting the tour, we walk past Jim's daily driver (a 5 series, of course) to the office so we can see site plans and a rendering of the course that was originally designed by Alan Wilson. Wilson has an extensive history with course design including the Mid-America Motorplex, New Jersey Motorsports Park and most recently The Thermal Club in California. (BMW has just partnered with The Thermal Club to open a west coast version of their Performance Center. I'm still trying to get to the east coast one but will definitely add the west coast to my bucket list as well.) As the plans stretch out across the table, I see the impressive design unfold – all 2.5 miles and 15 turns of it. Jim explains many of the nuances, insights and unique aspects of the design that don't necessarily jump off the plans. First and foremost, he notes that the vistas of natural beauty created by the course's 250 feet of elevation change will be second to none. In particular, he points to turn #6 and drags a finger downhill toward #7 and advises this will be the signature section of the course with an amazing panoramic view of the mountains. As I see later, he wasn't kidding – it really is something to be seen. While many of Wilson's courses have narrower roads, Jim notes that those at Valley Motorsports Park have been widened. He points out generous run-off areas, barricades and fence-

continued on page 10 ▶

Pete McDonough heading into 7. Spectacular.

S N P B X U A F P E A W B W
 G T E E L S D Y F S K G T A W
 B X A R V A P W N R C L H G
 G F K E Z E C O J M E J A H L
 F R O T S Y W K Y J P R S D G
 F O K S Y N T X A E C D
 D A S O B K D K S I R T D S Y
 B D D R R N E M I C A A L I
 X U F E E C W T U S E O H Y
 V S L E Y O S A A H R P M
 H A N D C A W F R E E Z I N G
 P N L I T O G R A T C H F D
 D D E K N D R A Z Z I L B E A
 U T H S U L S C O M Z W J A R
 Y T F J R F H C U B D O T K



photo: www.driving.ca

hidden phrase clue:
 Fun for some, white-knuckle dread for others

○ ○ ○ ○ ○ ○ ○ ○ ○ ○ ○ ○

answer key on page 10 ▶

◀ Club Motorsports - Part 1 - continued from page 9

ing that have all been baked into the design to keep drivers safe. He also explains that the course will use traditional lighting and camera systems, marshals and tower observation to further ensure driver safety.

Jim also reviews the different membership levels that include bronze, silver, gold and platinum. Structured with one-time initiation fees and annual membership dues, there's a plan for pretty much every budget. It's worth noting that it pays to get in early – initiation fees paid prior to opening day can net a savings anywhere from \$7,500 - \$25,000. And what's even better is that these memberships can be held with as little as a 10% (refundable) deposit. Course time for the various membership levels run from 6 (peak) days per season all the way up to unlimited and there's also a sliding scale for members to bring both driving and non-driving guests.

With the overview complete, we make our way outside, straddle the four-wheelers and begin our tour of the site. As we maneuver

our way around, a heavy equipment operator throws Jim a big smile and waves as we pass by. Other workers greet him as we stop to chat about progress. You realize pretty quickly that despite his lofty title of president, Jim is a down-in-the-trenches guy who has built good working relationships. For example, his good relations with Maine-based Sargent Corp., the



Building a dream.



construction firm on the project, are evident and should directly result in a superior end-product we can all enjoy.

As the tour continues, we see the massive, mobile rock crushing operation that turns ledge into usable construction material throughout the site.



A performance driver's paradise in New Hampshire's picturesque White Mountains. Valley Motorsports Park will soon be a state-of-the-art 2.5 mile road course with 15 turns, 250 feet of elevation change and many amenities including two large paddocks, first-class road-side condo garages and an almost half mile long karting course thrown in for added fun.

Whether being used for retaining walls, draining swales or as part of the road-box, all the material gets re-used. Like the rest of site, the scope and scale of the rock crushing needs to be seen to be appreciated – it's truly impressive stuff. We stop at turn #15 - the entry to the front straight - and hike up to the elevation where the club-house will be built. Much like the views from turn #6, this facility will share the same panoramic views of the mountains. From this vantage point, you can also see where the two paddocks and Garage-Mahals will be located. The term Garage-Mahal is a play on India's famed Taj-Mahal and is a tongue-in-cheek reference coined by Club Motorsport to describe their road-side condos that can be rented by members. A little further off in the distance, tucked behind turn #1 you can also see the 4/10 of a mile karting course. Though it lacks the elevation changes and length of the main course, it looks every bit as fun.

to be continued in the April/May Profile ▶▶

Answers to Word Puzzle on pages 8 & 9



- WINTER DRIVING
- Hidden Phrase
- SNOW TREES (4,14,NE)
- SNOW (4,14,NE)
- SLEET (6,2,W)
- ROAD SAND (2,5,S)
- ICE SCRAPER (11,13,N)
- HEATED SEATS (12,12,NW)
- DEFROSTER (4,11,N)
- BLACK ICE (4,1,SE)
- SNOW BRUSH (10,2,SW)
- SLUSH (7,14,W)
- SKID (4,14,N)
- ROAD SALT (13,10,N)
- HEATER (12,10,N)
- FREEZING (8,11,E)
- BLIZZARD (13,13,W)
- Scramble & Search [Over/Down/Direction]

Kensington
AUTOWORKS
 SERVICE AND REPAIRS FOR ALL MAKES AND MODELS
 SPECIALIZING IN BMW SERVICE
 272 South Road • Kensington NH 03833
 (At the Junction of Route 107 & Route 150)
 Tel: (603) 394-0081 • Toll Free: (866) 694-0081
 WWW.KENSINGTONAUTOWORKS.COM

Tire Rack Street Survival's Circle of Excellence BMW CCA Foundation Launches new Volunteer Recognition Program

by: Bill Wade, National Program Manager, Tire Rack Street Survival

The BMW CCA Foundation Board of Trustees are proud to announce the creation of the Tire Rack Street Survival Circle of Excellence Volunteer Recognition Program.

With the gift from an anonymous donor received through the current Foundation Capital Campaign, the Board of Trustees wanted to create a unique program to recognize a group of outstanding Tire Rack Street Survival volunteers; the first awards being awarded in January of 2015.

“Without our volunteers this program would not have gotten off the ground, says Leo Newland, President of the BMW CCA Foundation, “and without the leadership and tireless hard work from these dedicated and talented individuals we would not have trained over 10,000 students and held 700 schools in the past 12 years. We think it is high time we thank them in a bigger way”. This will be accomplished on a select basis so that the achievements are not diluted by having too many people within the ‘Circle’.

The categories will include individuals, Chapters & Regions from all stakeholders within the BMW CCA, BMW CCC, Sports Car Club of America, Porsche Club of America, Audi Club of North America, National Council of Corvette Club etc. After the initial year there will be a dedicated Circle of Excellence selection committee established which will include past recipients that will select future reward winners.

Those recognized in the top three levels would be publicly acknowledged on a Circle of Excellence plaque at the BMW CCA Foundation office, on the Street Survival website; the BMW CCA Foundation website, the



Tire Rack Street Survival's Circle of Excellence

5 Level Program Of Rewards

Level 1 - A Day-of School Thank You - Working with a key sponsor, Michelin, all volunteers will be given a small branded TR-SS gift for volunteering their time that day.

Level 2 - End of Year Recognition - Throughout the year, we will collect the names of all the in-car coaches and volunteers to be included in drawings for tire certificates, radar detectors, gift certificates for tools, car care products and the like.

Level 3 - “Chapter Volunteers & Instructors of the Year” - Nominated by their Chapter brethrenand selected via an independent nomination process, as going above and beyond the call to make Tire Rack Street Survival the best program possible. This will be done at the conclusion of the calendar year, and will include from 5 to 20 people annually.

Level 4 - “Chapter/Region School Host of the year”- would be selected by the BMW CCA Foundation, with input from all stakeholders

Level 5 - “Hero of the Year” - Individual Street Survival School Organizer/Volunteer. We plan on Recognizing one per year. This category would be selected by the BMW CCA Foundation, with input from all stakeholders.



German AutoSport

18 Chestnut Street

Amesbury, MA 01913

978-388-1288

www.germanautosport.com

Over 20 years of European car experience

FREE ESTIMATES including computer diagnosis

NOW OFFERING FULL DETAIL SERVICES

SCCA Foundation page of the SCCA website, BMW CCA website and all other stakeholders website, when appropriate and all print and web-based publications.

Press releases would be sent to sponsors, and all auto enthusiast outlets, all stakeholders chapter/region magazines and newsletters and web based publications.

The Top Level “Hero of the Year” award and would receive a special “Garage Makeover” prize valued at up to \$3,500 from a top flight custom garage equipment supplier.

All those acknowledged in the Chapter/Region category and peer based volunteer(s) Levels III -V, would be also given a gift, in the form of a unique Street Survival Circle of Excellence embroidered team jacket, signifying their prolonged dedication and efforts to ensure our cause remains strong in each and every community.

www.streetsurvival.org

**Upcoming Events
and Noteworthy Dates for Your Calendar**



www.whitemtn-bmwclub.org/calendar.html

Dates and Times subject to change. Always check the website for most current info.

Monday February 9th, 2015 6:30pm - 9:00

Chapter Membership Dinner

Come join us for engaging conversation, camaraderie, and a free light dinner and drinks at our bi-monthly meeting. This month's meeting location is at The Common Man restaurant of Windham COST: FREE Food and Drinks, RSVP

Monday February 23rd, 2015 6:30pm - 8:30

Social Event Committee Meeting

Join the Social Events Committee in planning for up-coming events. New committee members are always welcome. Meeting location is The Common Man of Windham COST: FREE Food and Drinks, RSVP

Friday March 6th, 2015 5:00pm

Profile submission deadline

All general content (excluding ads) to be considered for inclusion in the Apr/May Profile must be received by the copy collection editor. Submissions and questions to editor@whitemtn-bmwclub.org.



Monday March 9th, 2015 6:30pm - 9:00

Chapter Membership Dinner

Come join us for engaging conversation, camaraderie, and a free light dinner and drinks at our bi-monthly meeting. This month's meeting location is at The Common Man restaurant of Windham COST: FREE Food and Drinks, RSVP

Monday March 23rd, 2015 6:30pm - 8:30

Social Event Committee Meeting

Join the Social Events Committee in planning for up-coming events. New committee members are always welcome. Meeting location is the Airport Diner in South Manchester COST: FREE Food and Drinks, RSVP

Sunday March 29th, 2015 8:00am - 9:00am

Parker's Maple Barn Breakfast Meet And Greet

A WMC annual tradition! Visit one of NH's great spots for local flavor and fun at Parker's Maple Barn. Join us for a fabulous breakfast (pay your own), a tour through the sugar house and purchase fresh maple syrup in the gift shop. (Non-members welcome) Parker's Maple Barn, 1316 Brookline Road, Mason, NH. COST: Pay Your Own, RSVP



RECARO PERFORMANCE FRICTION BRAKES **COBRA** **Stilo** **OMP** **SCHRÖTH RACING** **HMS motorsport**

If you drive on the track, come see us.
We have what you need.

9A Electronics Avenue - Danvers, MA 01923 - 888.467.3269
www.hmsmotorsport.com

Monday April 13th, 2015 6:30pm - 9:00

Chapter Membership Dinner

Come join us for engaging conversation, camaraderie, and a free light dinner and drinks at our bi-monthly meeting. This month's meeting location is at The Common Man restaurant of Windham COST: FREE Food and Drinks, RSVP

Monday April 27th, 2015 6:30pm - 8:30

Social Event Committee Meeting

Join the Social Events Committee in planning for up-coming events. New committee members are always welcome. Meeting location is The Common Man of Windham COST: FREE Food and Drinks, RSVP

Friday May 1st, 2015 5:00pm

Profile submission deadline

All general content (excluding ads) to be considered for inclusion in the Jun/Jul Profile must be received by the copy collection editor. Submissions and questions to editor@whitemtn-bmwclub.org.

more on the chapter website!

about chapter calendar:

Registration, RSVP, travel directions, and details for all listed events are on the chapter website.

High performance driving schools have special advance requirements.

Contact the advertising manager for ad submission deadlines.

Lockton Affinity Motorsports Passionate Car People, Who Just Happen To Sell HPDE Insurance

by: Ryan Staub, Lockton Affinity Motorsports



They probably won't come right out and say it, but your auto insurer likely doesn't cover you during HPDE events. Lucky for you, we do. And, because it's easy, fast, and affordable, there's no reason you shouldn't be protected.

2014 was a good year and participation in the HPDE Insurance program continues to grow. Over the past two years we've made significant improvements to our website to improve the ease of purchase for both new and existing customers. Throughout the year we've received excellent feedback from clients regarding the claim process. We keep expanding our social media/blog outreach to the community and our customers really seem to appreciate this; we're regularly posting driving tips from Ross

Bentley, providing helpful articles about car preparation, and even tips about towing.

My team is in the final stages of creating a toolkit of resources that we think will be very helpful for BMW CCA Chapters. The idea is to help Chapters improve attendance at HPDE events by informing/educating members about insurance and the BMW CCA membership benefit for discounted HPDE insurance.

At Lockton Motorsports, our minds are focused on keeping you safe, but in our hearts, we're car enthusiasts just like you. We're proud to be a part of the motorsports community, offering what you need to enjoy your hobby to the fullest and we're excited for another great year in 2015!

www.locktonmotorsports.com



BMW CCA Day at Lime Rock Park A Tradition Continues in 2015

by: John E. Sullivan, North Atlantic Region Vice President BMW CCA

I am coordinating with Ryan McIntosh, the Club Liaison from LRP to organize the next BMW CCA Day. The date for the Tudor Race Series will be Saturday, July 25th. Save the date. Details will be announced as soon as possible.

Performance Upgrade Checklist

- ✓ Performance Exhaust System
- ✓ High Performance Ignition System
- ✓ High Flow Intake System
- ✓ Performance Chip

Great. But, how much did you gain?

Bring your BMW to New England Dragway's popular Wednesday & Friday Street Night before and after you make those upgrades. Establish a baseline and make sure you're getting the most for your performance dollar.

New England Dragway is conveniently located off Exit 8—NH Route 101 in Epping, New Hampshire. Visit our website www.newenglanddragway.com for more information.



Bring this ad for a \$3 discount on a Wednesday or Friday Spectator ticket!





16 Deer Run Road
Candia, NH 03034
sales@synaptic3.com

MOTORSPORTS • FABRICATION • SPECIALISTS

- AWD Dyno Tuning & Rental
- Engine Management / Cobb Pro Tuner
- Custom Forced Induction Systems
- Safety Cage Design & Construction
- Track Alignments & Corner Balancing
- Fender Rolling

Over 15 years experience with European & Japanese high performance cars
We specialize in unique custom projects for street, track, & rally cars

603 · 244 · 4631

WWW.SYNAPTIC3.COM

MOTORSPORTS • FABRICATION • SPECIALISTS

SYNAPTIC 3 Performance / a division of RAD Motorsports, LLC.

**From One Garage to Another
Cars and Parts, Wheels and Deals**

www.whitemtn-bmwclub.org/classified_ads.html

Availability and details subject to change. Always check the website for most current listings.



Wanted

E36 Coupe Right Rear Fender/Quarter Panel

Need only the top section of wheel well to replace rusted section. Call Drew Fitch at 207-756-9136 or e.mail Drew via the chapter website.

M3 Snow Tires And Wheels

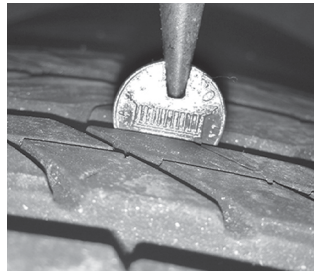
ALMOST NEW - \$750. Set of 4 staggered 18" "Dunlop Winter Sport M3" tires on M3 rims. Staggered: front: 225/45/18, rear: 255/40/18. Virtually no miles on them, no curb rash or dings. They are ready to go on pretty much any 3/5-Series. Call Andrew Duane at 603-770-7088 or e.mail Andrew via the chapter website.

Parts for Sale

BMW X5 Tires

Bridgestone Dueler HL 400 Runflats 255/50 R19 that were OEM. A set of nice highway All Season tires. About 12k miles, have more than 6/32"

left on the tread. Over \$1000 from Tire Rack, only asking \$675. Manufactured 12/11. Call Thomas Stoll at 973-445-3714 or e.mail Thomas via the chapter website.



Winter Wheel And Tire Set for E90 3 Series



Rial Salerno 17X8 ET30 (minus 1 size) with required TPMS and w/ appropriate length wheel bolts. 225-45-R17 Blizzak Run Flat LM 25 Performance Winter Tires. Two have 9/32 tread and two have 6/32. Accept BMW center caps. \$800. Call Philip W Sullivan at 603-582-7269 or e.mail Philip via the chapter website.



Help us save BMW...

M. Der stärkste Buchstabe der Welt.

**well at least
a small part of it.**

The Library, Archives, and Museum Program (LAM) has created a repository for BMW-related historical documents, literature, and paraphernalia, providing the public with access to rare and interesting BMW artifacts while ensuring their continued existence. This archive is housed in Greenville, South Carolina near the BMW CCA National Office and BMW Manufacturing.

Our growing Archives, Library, and Museum needs your tax-deductible donations. See our website for more info.

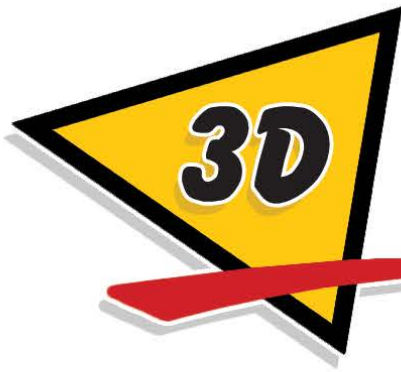
Join the Drive to Donate!



www.bmwccafoundation.org
864.329.1919

about classifieds:

Chapter members can submit (non-commercial) ads at no cost, which will run for three months on the website. Ads listed on the website at the time of publication are published in the Profile, space permitting. (Submit photos for inclusion with printed classifieds to the Profile's copy editor.) Ad requests submitted online are subject to approval by the WMC. The submitter, not the WMC, is responsible for the accuracy of ad content. The WMC cannot guarantee, in any manner whatsoever, items listed in the classifieds. To see the most current selection of classified ads, check out the chapter website.



AUTO WORKS, INC.

Your independent service facility since 1988

specializing in

BMW & MINI

quality service

BMW  **MINI**
road  **track**
vintage  **new**
always  **ready**
solid  **experience**

- Pre-Purchase Inspection
- Routine Maintenance
- Major Service & Repair
- Performance Upgrades
- Alignment Services
- Detail Services
- Pre-Track Inspection
- Race Car Preparation



proud members of:



603.882.3400 • www.3dautoworks.com
 One Industrial Drive • Route 111 • Hudson, NH 03051

For the Love Of Your Automobile
 Expert BMW service and repair with 45 years of combined craftsmanship.



- Over 7,000 square feet of space
- Custom Fabrication
- Chassis Dynamometer testing & vehicle calibration.
- Selling, Maintaining
- Founded on a family business that started in 1952.
- Enclosed Car Transportation

KMC
 Kachel Motor Company

425 Canal Street
 South Lawrence, MA

(617) 759 8973
 www.kmcauto.com

BMW Car Club
 of America
 White Mountain Chapter



PRESORTED
 STANDARD
 U.S. POSTAGE PAID
 MANCHESTER, NH
 PERMIT 420

BMW Car Club of America
 White Mountain Chapter
 P.O. Box 304
 Londonderry, NH 03053



www.whitemtn-bmwclub.org



VINTAGE SPORTS & RESTORATION

SERVICE SPECIALISTS

- Routine Service
- Inspection I, Inspection II
- Computer Diagnostics
- Autologic, GT-1, ISTA
- BMW Factory Trained Technicians
- Free Loaner Cars
- After Hours Drop-Off



ROUTINE SERVICE

RESTORATION

CARS FOR SALE



www.VSR1.com
 603.228.2888



theProfile is proudly printed by QuadGraphics on an HP Indigo 7000
 110J Commerce Way, Woburn, MA 01801 781.231.7200

www.qg.com